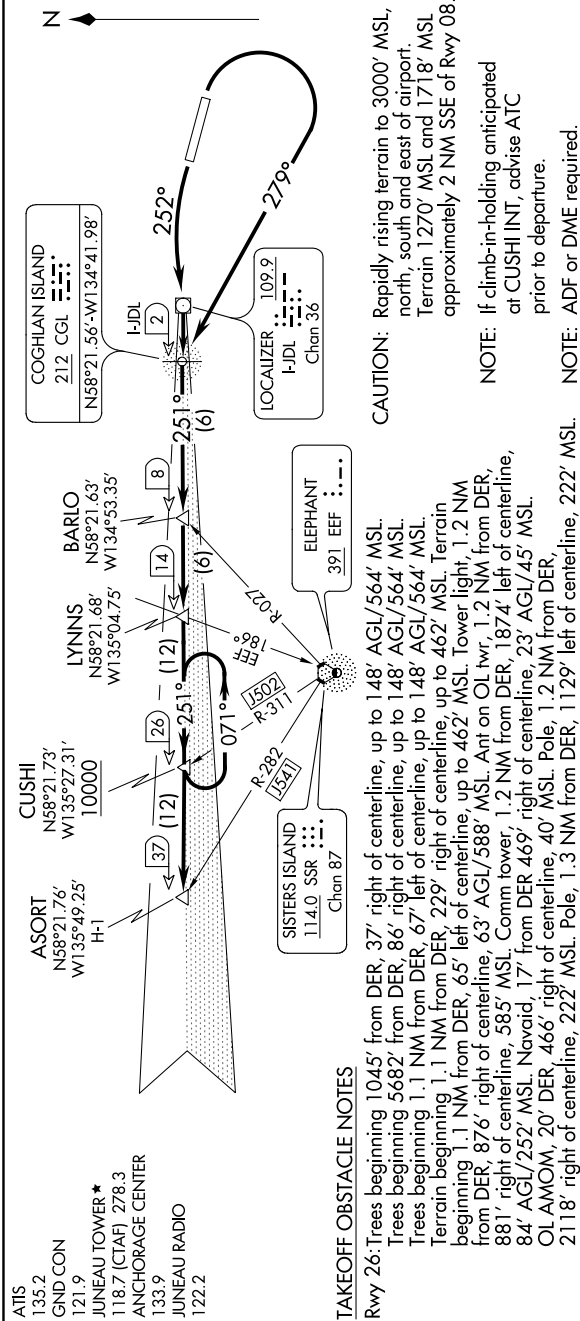


ASORT TWO DEPARTURE

AL-1191 (FAA)

JUNEAU INTL (JNU)(PAJN)  
JUNEAU, ALASKA

AK, 05 NOV 2020 to 31 DEC 2020



ASORT TWO DEPARTURE  
(ASORT2.ASORT) 12DEC13

DEPARTURE ROUTE DESCRIPTION

**TAKEOFF RUNWAY 8:** Climbing right turn as soon as practical. Climb in visual conditions direct CGL NDB or heading 279° to I-JDL West course/2 DME (visual conditions must be maintained from takeoff until established over CGL NDB or I-JDL West course/2 DME at or above 1000 MSL), thence . . . .

**TAKEOFF RUNWAY 26:** Climbing left turn heading 252° to CGL NDB or I-JDL West course/2 DME, thence . . . .

. . . . via I-JDL West course or 251° bearing from CGL NDB to cross CUSHI INT/I-JDL 26 DME at or above 10000, then on I-JDL West course or CGL NDB bearing 251° to ASORT INT/I-JDL 37 DME.

AK, 05 NOV 2020 to 31 DEC 2020

**TAKEOFF MINIMUMS**  
Rwy 26: Standard with minimum climb of 595' per NM to 800, then 360' per NM to 10000, or 600-2 with minimum of 360' per NM to 10000.  
Rwy 8: 1000-3 with minimum climb 350' per NM from 1000 to 10000.

NOTE: Chart not to scale.

JUNEAU, ALASKA  
JUNEAU INTL (JNU)(PAJN)