

LOC/DME I-JDL	APP CRS	Rwy Idg	8457
109.9	071°	TDZE	25
Chan 36		Apt Elev	26

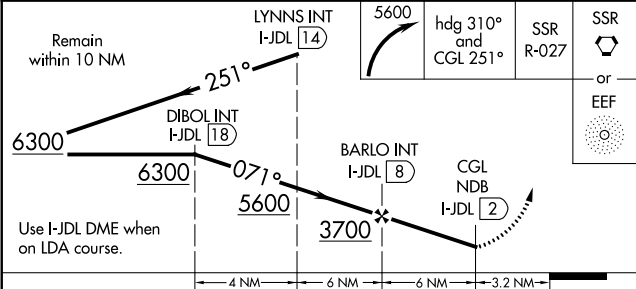
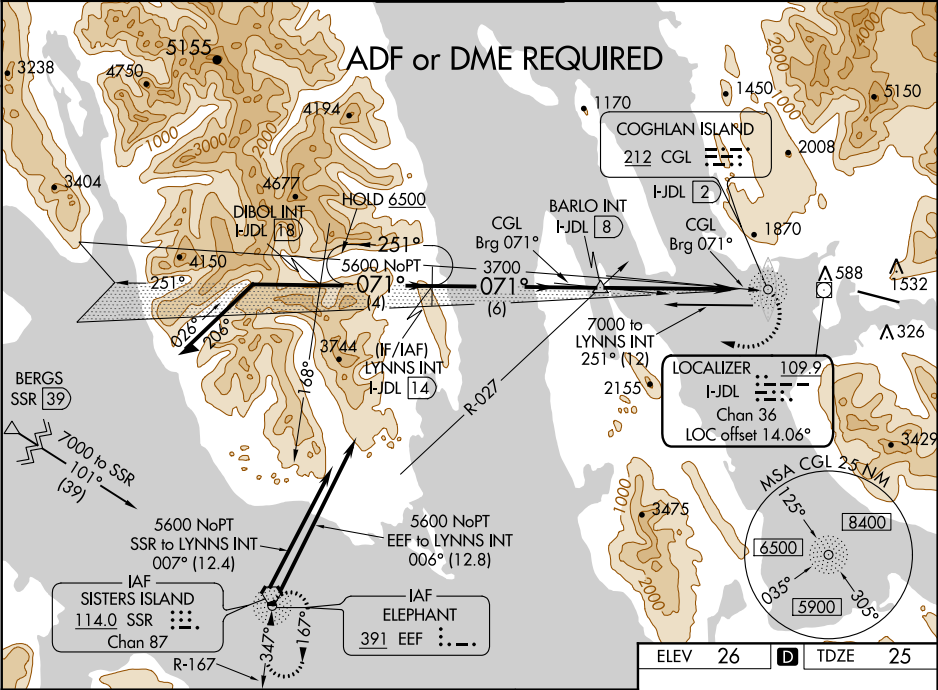
LDA X RWY 8  
JUNEAU INTL (JNU)(PAJN)

**⚠** When VGSi inop, procedure NA at night. Circling NA north of Rwy 8/26. ADF required. CAUTION: Any go-around after passing MAP will not provide standard obstruction clearance.

**MALSF**  
**Ⓜ**

**MISSED APPROACH:** Immediate climbing right turn to 5600 on heading 310° and on CGL NDB bearing 251° to intercept SSR VORTAC R-027 direct SSR VORTAC or EEF NDB and hold.

ATIS 135.2	ANCHORAGE CENTER 133.9	JUNEAU TOWER* 118.7 (CTAF) 278.3	GND CON 121.9	JUNEAU RADIO 122.2
---------------	---------------------------	-------------------------------------	------------------	-----------------------



CATEGORY	A	B	C	D
S-LDA 8	3200-4	3175 (3200-4)		NA
CIRCLING	3200-4	3174 (3200-4)	3340-4 3314 (3400-4)	3640-4 3614 (3700-4)
NIGHT MINIMUMS				
S-LDA 8	3200-4	3175 (3200-4)		NA
CIRCLING	3200-5 3174 (3200-5)	3200-10 3174 (3200-10)	3340-10 3314 (3400-10)	3640-10 3614 (3700-10)

ELEV 26 **D** TDZE 25

**Ⓜ** or **Ⓞ**

RRS Rwy 8  
REIL Rwy 8 and 26  
HIRL Rwy 8-26

AK, 05 NOV 2020 to 31 DEC 2020

AK, 05 NOV 2020 to 31 DEC 2020