

APP CRS	Rwy Idg	8457
070°	TDZE	25
	Apt Elev	26

# RNAV (GPS) V RWY 8

JUNEAU INTL (JNU)(PAJN)

**NA**  
-0°C

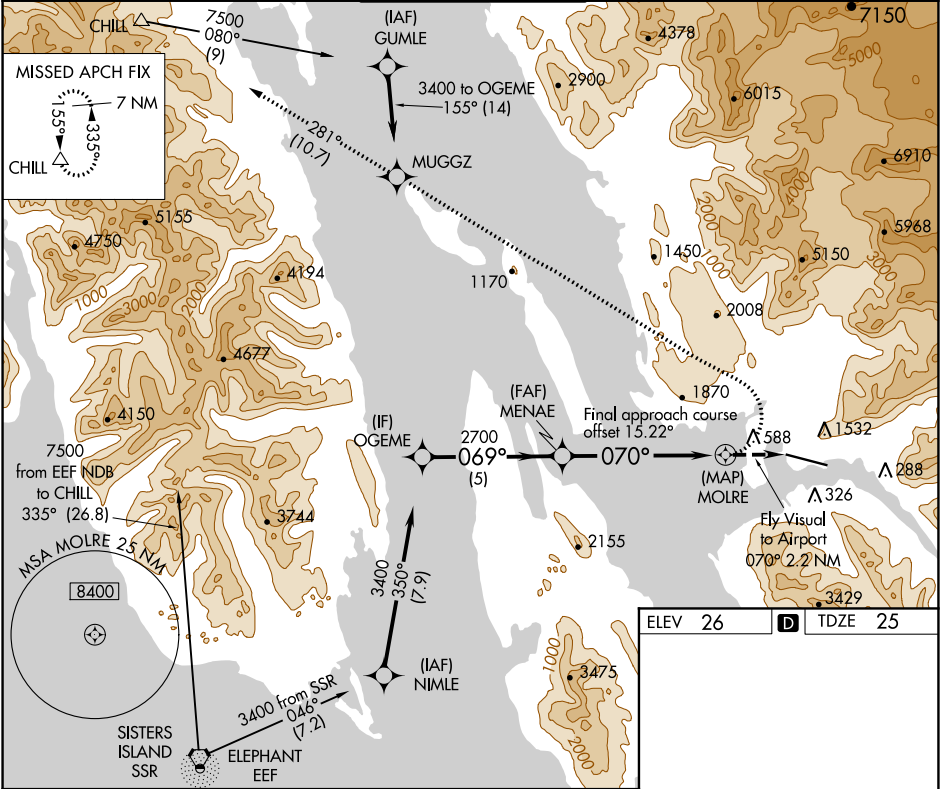
Circling NA at night. When VGSi inop, procedure NA at night. Visibility reduction by helicopters NA. DME/DME RNP-0.3 NA. Lead-in lights not aligned with final approach course. For inop Lead-in lights, increase visibility to 4 NM. Circling NA north of Rwy 8-26.


\* Missed approach requires minimum climb of 363 feet per NM to 3200.

**MALS**

**MISSED APPROACH:** Climbing left turn to 9000 direct MUGGZ and on track 281° to CHILL and hold, continue climb-in-hold to 9000.

ATIS <b>135.2</b>	ANCHORAGE CENTER <b>133.9</b>	JUNEAU TOWER ★ <b>118.7 (CTAF) 278.3</b>	GND CON <b>121.9</b>	JUNEAU RADIO <b>122.2</b>
----------------------	----------------------------------	---	-------------------------	------------------------------



OGEOME		VGSi and descent angles not coincident (VGSi Angle 3.50/TCH 38).		9000	MUGGZ	tr 281°	CHILL △
3400		069°		2700		070°	
		3.08° TCH 50		MOLRE		Fly Visual to Airport 070° 2.2 NM	
		5 NM		5.8 NM		2.2 NM	
CATEGORY	A	B	C	D			
LNAV MDA*	1880-2	1855 (1900-2)				NA	
LNAV MDA	2340-3	2315 (2400-3)				NA	
 CIRCLING	2340-3	2314 (2400-3)				NA	

ELEV 26

TDZE 25

**TWR** 107

8957 X 150

4600 X 150

2600

Fly Visual to Airport 070° 2.2 NM

RLLS Rwy 8

REIL Rwy 8 and 26

HIRL Rwy 8-26

AK, 05 NOV 2020 to 31 DEC 2020

AK, 05 NOV 2020 to 31 DEC 2020