

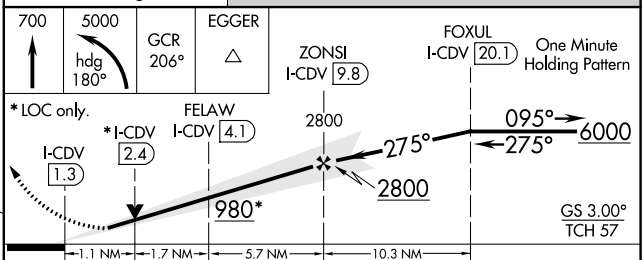
ILS or LOC RWY 27  
MERLE K (MUDHOLE) SMITH (CDV)(PACV)

**MISSED APPROACH:** Climb to 700 then climbing left turn to 5000 on heading 180° and GCR NDB bearing 206° to EGGER INT/I-CDV 11.1 DME and hold, continue climb-in-hold to 5000

JUNEAU RADIO  
122.2 123.6 (CTAF) **L**



Procedure NA for arrivals at  
FORAT on V319 eastbound.



MERLE K (MUDHOLE) SMITH (CDV)(PACV)