

ATIS ★ 124.3 273.5
CLNC DEL
128.8 306.925
GND CON
121.8 275.8
ELMENDORF TOWER
127.2 352.05
ANCHORAGE
DEP CON
118.6 290.5

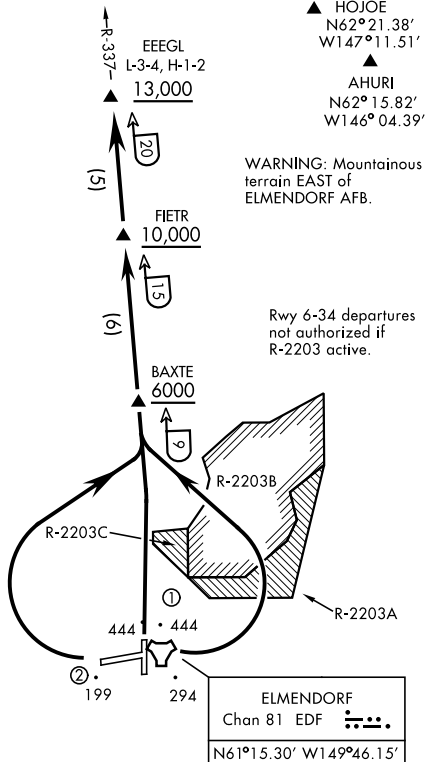
▲
SKWEN
N62°03.10'
W151°06.26'

▲
GERDE
N61° 53.90'
W153° 23.79'

▲
SPAIR
N60°37.16'
W154°19.90'

Rwy	Knots	60	120	180	240	300	360
6	V/V(fpm)	601	1202	1803	2404	3005	3606
24	V/V(fpm)	581	1162	1743	2324	2905	3486
34	V/V(fpm)	656	1312	1968	2624	3280	3936

ATC Climb Rate to 13,000



- ① Numerous trees to 444' MSL within 7300' of DER and 1850' left and right of centerline.
- ② 210' terrain 930' from DER, 730' right of centerline and 281' MSL (21' AGL) trees 4100' from DER, 1230' right of centerline.

NOTE: Chart not to scale

DEPARTURE ROUTE DESCRIPTION

TAKE-OFF RUNWAY 6: Climbing left turn to FL200, intercept EDF R-337 outbound. Cross BAXTE at or above 6000, cross FIETR at or above 10,000, cross EEEGL at or above 13,000. Upon leaving 13,000, proceed on course. Maintain FL200 or ATC assigned altitude.

TAKE-OFF RUNWAY 24: Climbing right turn to FL200, intercept EDF TACAN R-337 outbound. Cross FIETR at or above 10,000, cross EEEGL at or above 13,000. Upon leaving 13,000, proceed on course. Maintain FL200 or ATC assigned altitude.

TAKE-OFF RUNWAY 34: Climb to FL200, intercept EDF R-337 outbound. Cross BAXTE at or above 6000, cross FIETR at or above 10,000, cross EEGL at or above 13,000. Upon leaving 13,000, proceed on course. Maintain FL200 or ATC assigned altitude.