

WAAS CH <b>48924</b> <b>W23A</b>	APP CRS <b>232°</b>	Rwy Idg TDZE <b>1719</b> Apt Elev <b>1720</b>
--	------------------------	---

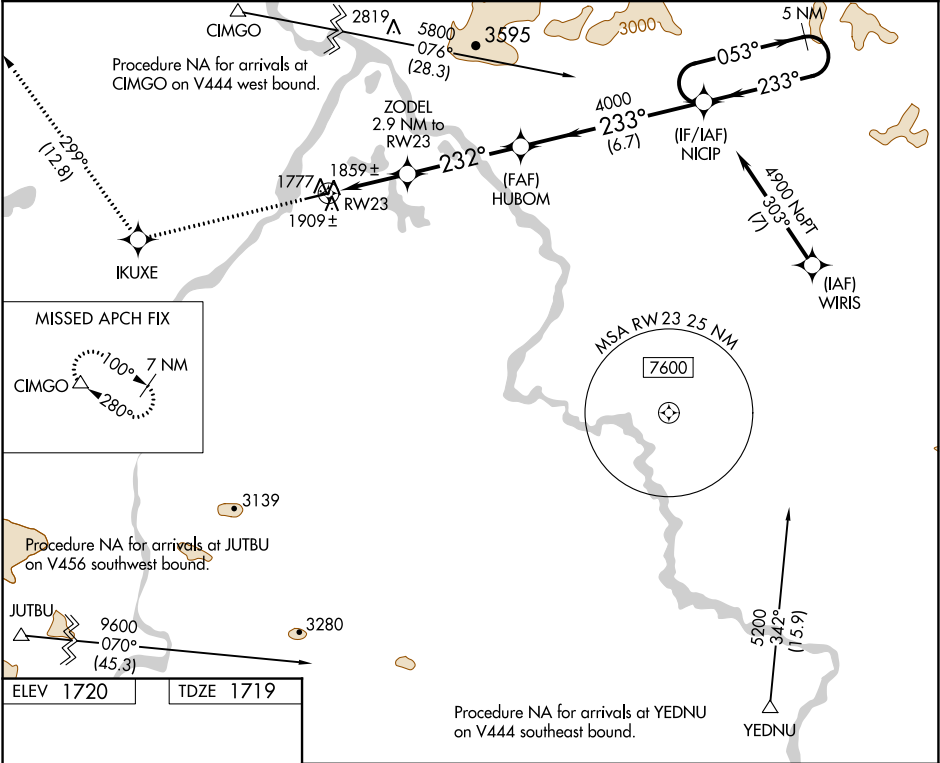
RNAV (GPS) RWY 23  
NORTHWAY (ORT)(PAOR)

-38°C

When local altimeter setting not received, procedure NA.  
DME/DME RNP-0.3 NA. Helicopter visibility reduction below ¾ SM NA.

MISSED APPROACH: Climb to 8000 direct IKUXE and on track 299° to CIMGO and hold, continue climb-in-hold to 8000.

ASOS <b>135.4</b>	ANCHORAGE CENTER <b>126.55 323.0</b>	NORTHWAY RADIO <b>123.6 (CTAF) 0</b>
----------------------	---	---



ELEV **1720** TDZE **1719**

REIL Rwy 23   
MIRL Rwy 5-23

1804

5100 X 100

232° to RW23

8000	IKUXE	tr 299°	CIMGO	NICIP	5 NM Holding Pattern
			ZODEL 2.9 NM to RW23	HUBOM	
			1.2 NM to RW23		
			2660	4000	
			1.7 NM	4.2 NM	6.7 NM
CATEGORY	A	B	C	D	
LP MDA	2120-1	401 (400-1)	2120-1½	401 (400-1½)	
LNAV MDA	2160-1	441 (500-1)	2160-1¾	441 (500-1¾)	
CIRCLING	2220-1	500 (500-1)	2220-1½ 500 (500-1½)	2280-2 560 (600-2)	

AK, 05 NOV 2020 to 31 DEC 2020

AK, 05 NOV 2020 to 31 DEC 2020