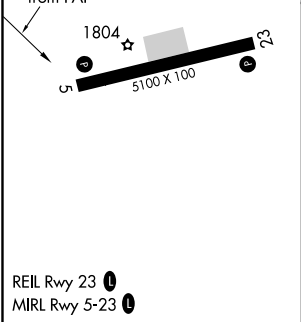
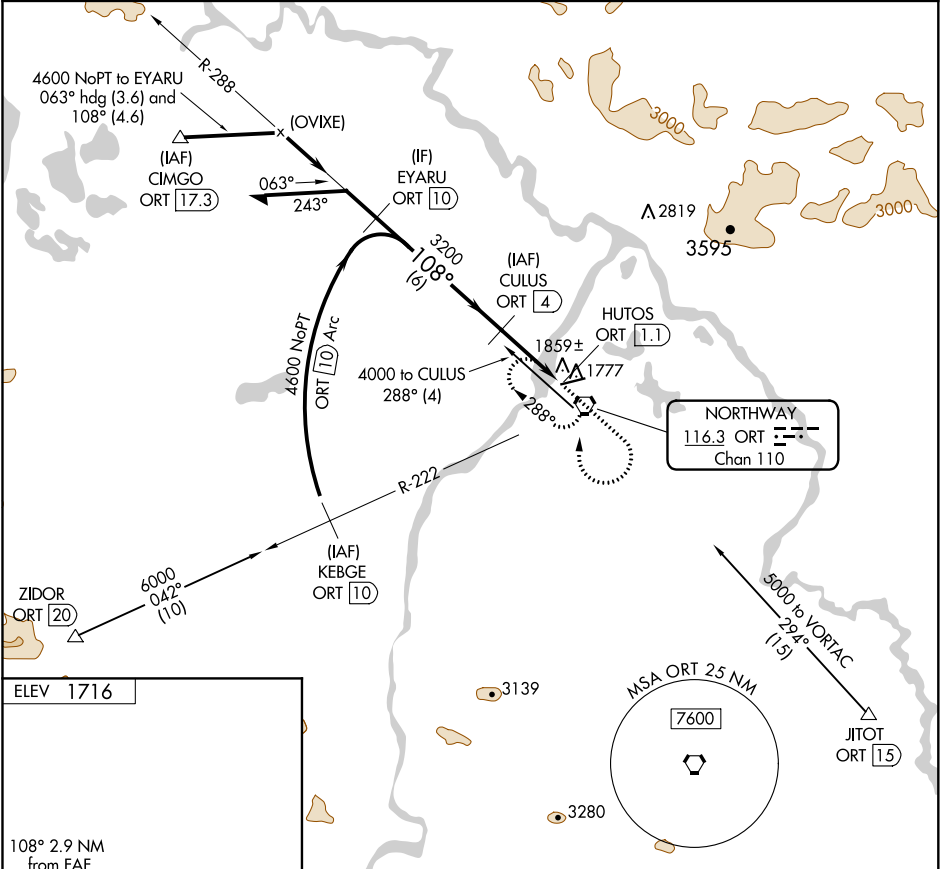


VORTAC ORT 116.3 Chan 110	APP CRS 108°	Rwy Idg TDZE Apt Elev N/A N/A 1716
---	------------------------	--

VOR/DME-A
NORTHWAY (ORT)(PAOR)

-38°C	MISSED APPROACH: Climb to 3500 then climbing right turn to 8000 direct ORT VORTAC and hold, continue climb-in-hold to 8000.
-------	---

ASOS 135.4	ANCHORAGE CENTER 126.55 323.0	NORTHWAY RADIO 123.6 (CTAF) 0
----------------------	---	--



Remain within 10 NM	CULUS ORT 4	3500	8000	ORT
3700	288°	6000		
3200	108°			
		3200		
		2.9 NM		
				HOTOS ORT 1.1
CATEGORY	A	B	C	D
CIRCLING	2220-1	504 (600-1)	2220-1½ 504 (600-1½)	2280-2 564 (600-2)