

ILS or LOC/DME RWY 10

LOC/DME I-BIG 111.1 Chgn 48	APCH CRS 102°	Rwy Idg 6115 TDZE 1253 Arpt Elev 1285
---	-------------------------	--

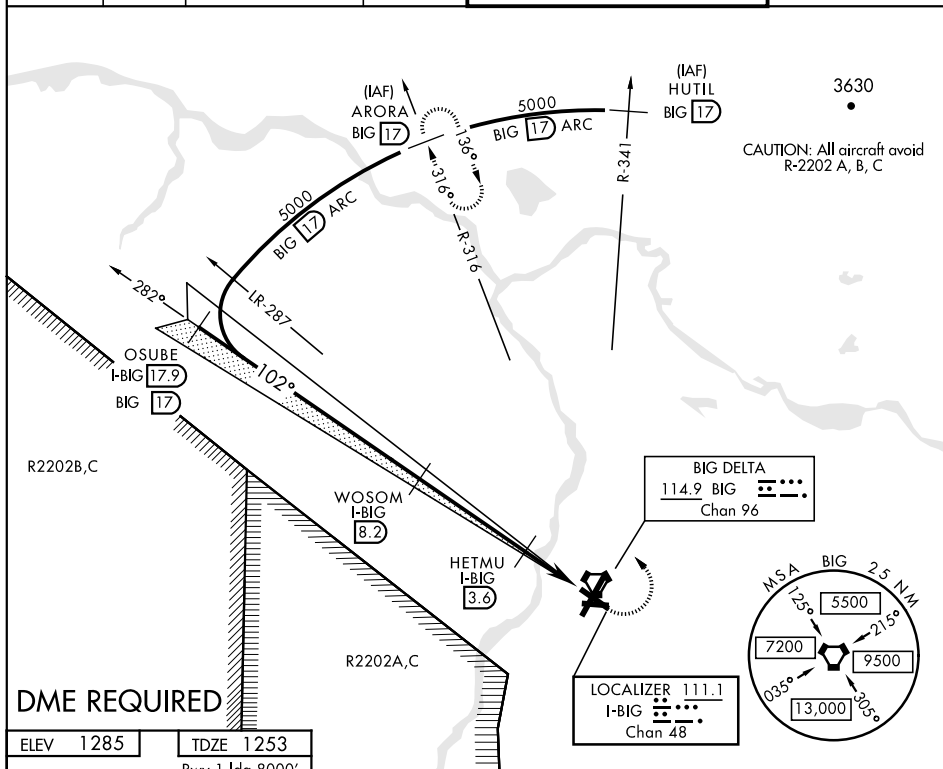
AL-1218 [USA]

ALLEN AAF (PABI)

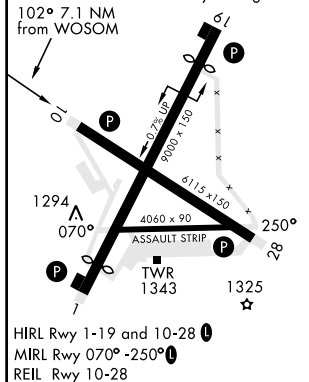
T * Circling not authorized East of Rwy 1-19.

MISSED APPROACH: Climb to 2200 then climbing left turn to 5000 via BIG R-316 to ARORA/BIG 17 DME and hold.

ATIS 132.075	ASOS 135.65	ANCHORAGE CENTER 135.3 322.5	CTAF 122.9 0	ALLEN TOWER ★ 119.8 235.775 40.8 (E) FM	GND CON 118.225 251.05
-----------------	----------------	---------------------------------	-----------------	--	---------------------------



ELEV 1285	TDZE 1253
	Rwy 1 ldg 8000'
	Rwy 19 ldg 8000'



OSUBE I-BIG 17.9

WOSOM I-BIG 8.2

Use I-BIG DME when on localizer course.

Procedure Turn NA

HETMU I-BIG 3.6

I-BIG 1.1

5000

102°

3600

2100

4.6 NM

2.5 NM

2.5 NM

2.5 NM

GS 3.00° TCH 51

VGS and ILS glidepath not coincident.

LOC DME

CATEGORY	A	B	C	D
S-ILS 10	1453- $\frac{3}{4}$	200	(200- $\frac{3}{4}$)	
S-LOC 10	1560-1	307	(300-1)	
CIRCLING *	1720-1 435 (500-1)	1760-1 475 (500-1)	1760-1 $\frac{1}{2}$ 475 (500-1 $\frac{1}{2}$)	1860-2 575 (600-2)

DELTA JUNCTION/FORT GREELY, ALASKA

64°00'N-145°43'W

ALLEN AAF (PABI)

ILS or LOC/DME RWY 10

Orig D 05DEC19

AK, 03 DEC 2020 to 31 DEC 2020