

NDB-A

NDB DJN <u>347</u>	APCH CRS 186°	Rwy Idg TDZE Arpt Elev	N/A N/A 1285
------------------------------	-------------------------	------------------------------	---

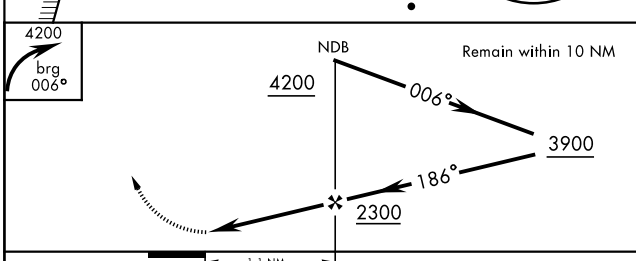
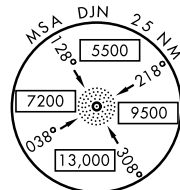
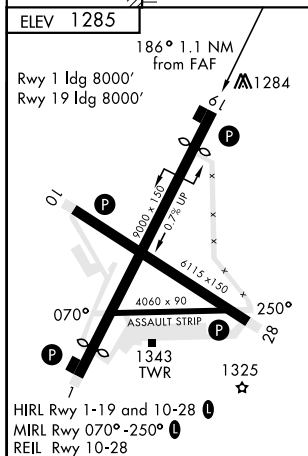
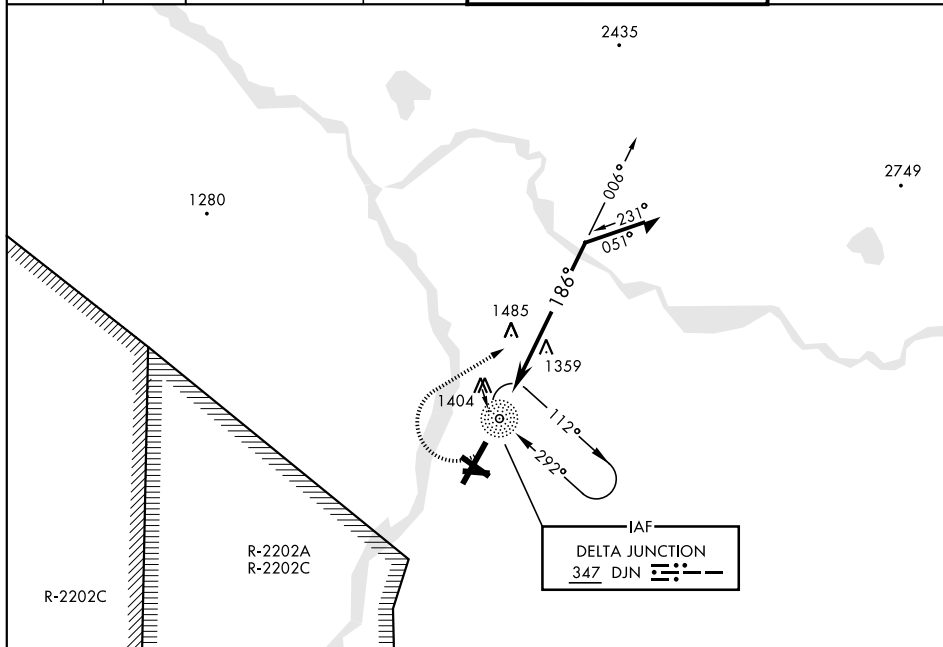
AL-1218 [USA]

ALLEN AAF (PABI)

T * Circling not authorized East of Rwy 1-19.

MISSED APPROACH: Climbing right turn to 4200 via 006° bearing from DJN NDB, then right turn direct DJN NDB and hold.

ATIS 132.075	ASOS 135.65	ANCHORAGE CENTER 135.3 322.5	CTAF 122.9 0	ALLEN TOWER ★ 119.8 235.775 40.8 (E) FM	GND CON 118.225 251.05
-----------------	----------------	---------------------------------	-----------------	--	---------------------------



FAF to MAP 1.1 NM						<div>1.1 NM</div>				
Knots	60	90	120	150	180	CATEGORY	A	B	C	D
Min:Sec	1:06	0:44	0:33	0:26	0:22	CIRCLING *	1880-1	595 (600-1)	1880-1½ 595 (600-1½)	1900-2 615 (700-2)

DELTA JUNCTION/FORT GREELY, ALASKA

64°00'N-145°43'W

ALLEN AAF (PABI)

Amdt 2B 05DEC19

NDB-A

AK, 03 DEC 2020 to 31 DEC 2020

AK, 03 DEC 2020 to 31 DEC 2020