

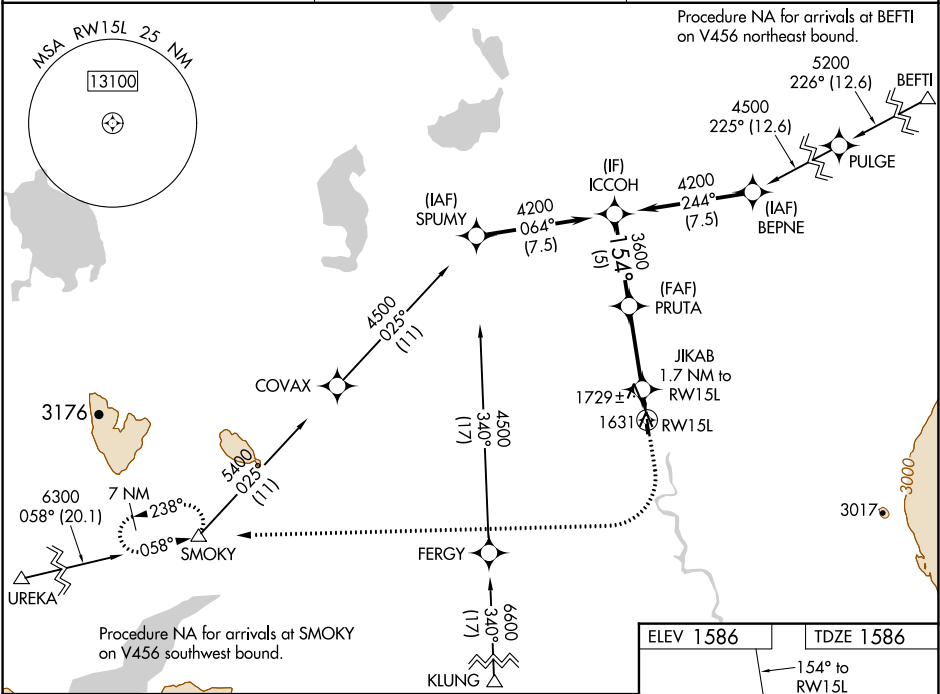
WAAS CH 82543 W15A	APP CRS 154°	Rwy ldg TDZE 1586 Apt Elev 1586
--	------------------------	---

RNAV (GPS) RWY 15L

GULKANA (GKN) (PAGK)

RNP APCH. ▼ -37°C	Circling Rwy 15R, 33L NA at night. Rwy 15L helicopter visibility reduction below ¾ SM NA. For uncompensated Baro-VNAV systems, LNAV/VNAV NA below -21°C or above 54°C.	MISSED APPROACH: Climb to 2100 then climbing right turn to 7000 direct SMOKY and hold, continue climb-in-hold to 7000.
-------------------------	--	--

ASOS 134.85	ANCHORAGE CENTER 119.5 317.5	CTAF 122.9 0
-----------------------	--	------------------------



ICCOH				
PRUTA				
JIKAB 1.7 NM to RWY15L				
RWY15L				
*2160				
GP 3.00° TCH 49				
5 NM 4.5 NM 1.7 NM				
CATEGORY	A	B	C	D
LNAV/ VNAV	DA	1836-1	250 (300-1)	
LPV	DA	1877-1	291 (300-1)	
LNAV MDA	2040-1	454 (500-1)	2040-1 ¾	454 (500-1 ¾)
CIRCLING	2040-1	2080-1	2080-1 ½	2200-2
	454 (500-1)	494 (500-1)	494 (500-1 ½)	614 (700-2)

