

APP CRS	Rwy Idg	4600
038°	TDZE	368
	Apt Elev	368

RNAV (GPS) RWY 4L

NENANA MUNI (ENN)(PANN)

RNP APCH.

▼

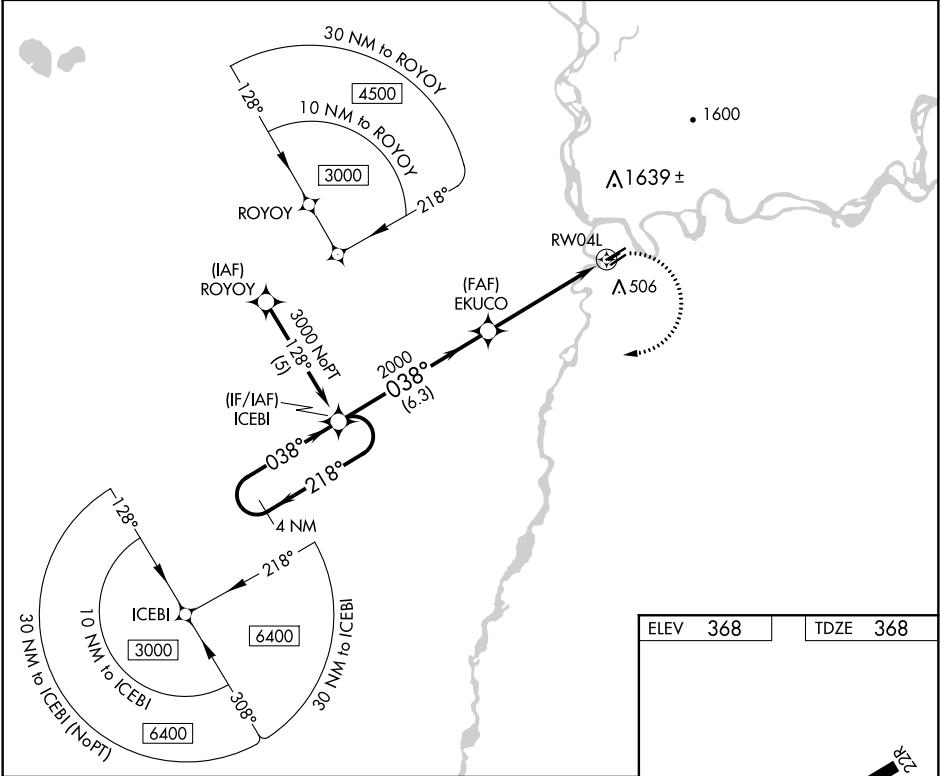
⚠

❄

When local altimeter setting not received, use Fairbanks Intl altimeter setting and increase all MDAs 100 feet and visibility LNAV Cat C ¼ SM. Circling NA west of Rwy 4L-22R. Procedure NA at night. Circling NA to Rwys 4R, 22L, 4W and 22W. Rwy 4L helicopter visibility reduction below 1 SM NA.

MISSED APPROACH: Climbing right turn to 3000 direct ICEBI and hold.

ASOS	FAIRBANKS APP CON	FAIRBANKS RADIO	CTAF
125.2	125.35 363.2	122.5	122.1



4 NM Holding Pattern

ICEBI

3000

218°

038°

EKUCO

038°

2000

1.3 NM to RWY 04L

3.04° TCH 35

3.7 NM

6.3 NM

1.3

CATEGORY	A	B	C	D
LNAV MDA	800-1	432 (500-1)	800-1¼ 432 (500-1¼)	800-1½ 432 (500-1½)
CIRCLING	860-1	492 (500-1)	860-1½ 492 (500-1½)	920-2 552 (600-2)

ELEV 368

TDZE 368

MIRL Rwys 4L-22R and 4R-22L
REIL Rwys 4L and 22R

AK, 05 NOV 2020 to 31 DEC 2020

AK, 05 NOV 2020 to 31 DEC 2020