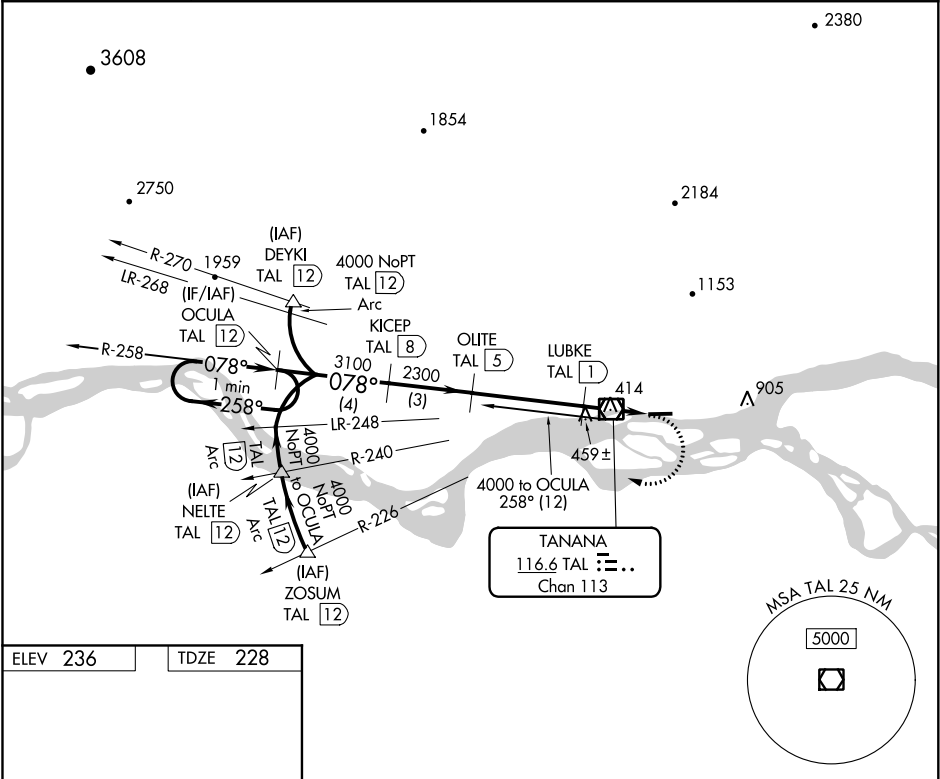


VOR/DME TAL	APP CRS	Rwy Idg	4400
116.6	078°	TDZE	228
Chan 113		Apt Elev	236

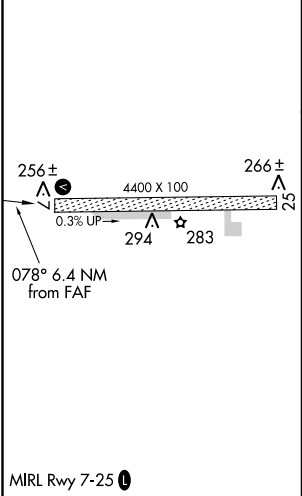
VOR/DME RWY 7
RALPH M CALHOUN MEMORIAL (TAL) (PATA)

-50°C	Circling NA north of Rwy 7-25. Helicopter visibility reduction below ¾ SM NA.	MISSED APPROACH: Climbing right turn to 4000 via heading 275° and TAL VOR/DME R-258 to OCULA 12 DME and hold, continue climb-in-hold to 4000.
-------	--	---

ASOS 135.1	ANCHORAGE CENTER 133.1 285.4	FAIRBANKS RADIO 122.65	CTAF 122.9
---------------	---------------------------------	---------------------------	---------------



ELEV 236	TDZE 228
----------	----------



VGSI and descent angles not coincident (VGSI Angle 3.00/TCH 24).			
One Minute Holding Pattern			
CATEGORY	A	B	C
S-7	720-1 492 (500-1)	720-1¼ 492 (500-1¼)	720-1½ 492 (500-1½)
CIRCLING	720-1 484 (500-1)	720-1½ 484 (500-1½)	800-2 564 (600-2)

AK, 05 NOV 2020 to 31 DEC 2020

AK, 05 NOV 2020 to 31 DEC 2020