

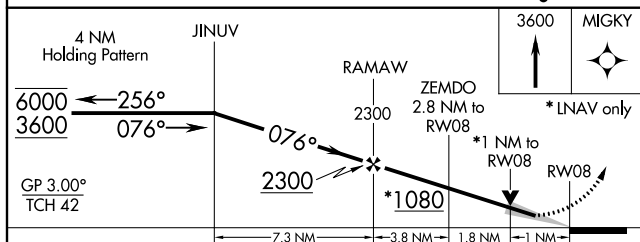
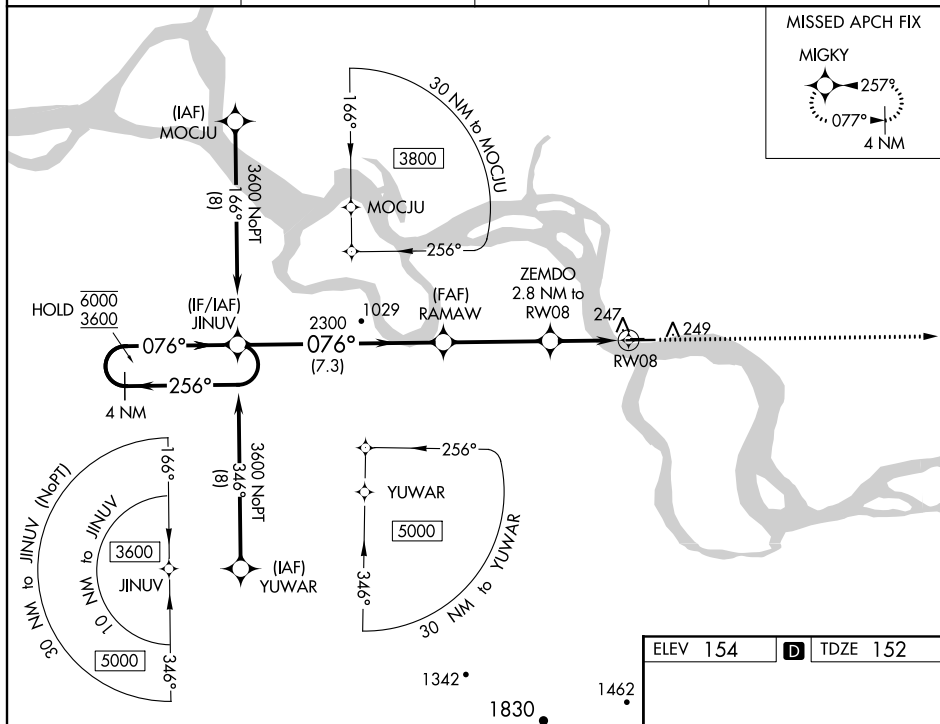
# RNAV (GPS) RWY 8


  -33°C

For uncompensated Baro-VNAV systems, LNAV/VNAV NA below -20°C or above 54°C.

**MISSED APPROACH:** Climb to 3600 direct MIGKY and hold.

CTAF  
123.0 



CATEGORY	A	B	C	D
LPV DA		402-1	250 (300-1)	
LNAV/ VNAV DA		410-1	258 (300-1)	
LNAV MDA		500-1	348 (400-1)	
 CIRCLING	560-1 406 (500-1)	620-1 466 (500-1)	620-1½ 466 (500-1½)	720-2 566 (600-2)

