


WAAS CH 45838 W11A	APP CRS 109°	Rwy Idg 5800 TDZE 97 Apt Elev 97
--	------------------------	---

RNAV (GPS) RWY 11
ANIAK (ANI)(PANI)

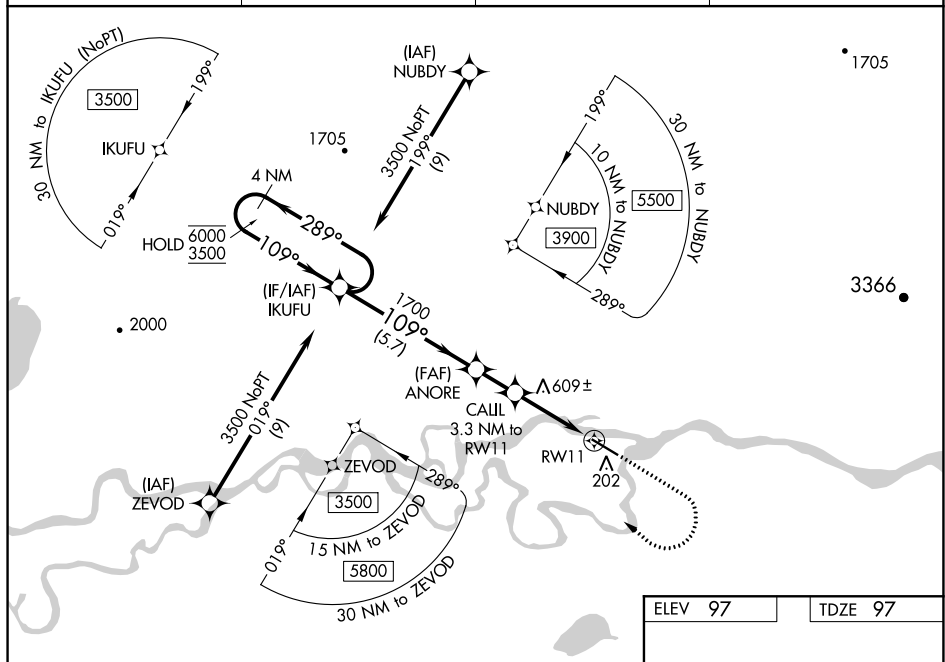
RNP APCH.

 Circling NA north of Rwy 11-29. Rwy 11 helicopter visibility reduction below $\frac{3}{4}$ SM NA. Inop table does not apply to LPV, LNAV/VNAV all Cts, LNAV Cat A. For uncompensated Baro-VNAV systems, LNAV/VNAV NA below -21°C or above 54°C. For inop ALS, increase LNAV Cat C/D visibility to 2 $\frac{1}{2}$ SM.

MALSF

MISSED APPROACH: Climb to 1500 then climbing right turn to 3500 direct IKUFU and hold, continue climb-in-hold to 3500.

AWOS-3P 124.3	ANCHORAGE CENTER 118.15 251.05	CLNC DEL 118.15	CTAF 122.10
-------------------------	--	---------------------------	-----------------------



4 NM
Holding Pattern

IKUFU

ANORE

CAUL
3.3 NM to
RW11

RW11

*LNAV only

6000 ← 289°
3500 → 109°


1700

*1160

*2.3 NM to
RW11

GP 3.00°
TCH 35

5.7 NM 1.6 NM 1 NM 2.3 NM

CATEGORY		A	B	C	D
LPV	DA	347-1 250 (300-1)			
LNAV/ VNAV	DA	994-4 897 (900-4)			
LNAV	MDA	860-1 763 (800-1)		860-2 763 (800-2)	
 CIRCLING		860-1 763 (800-1)	860-1¼ 763 (800-1¼)	860-2½ 763 (800-2½)	1200-3 1103 (1200-3)

