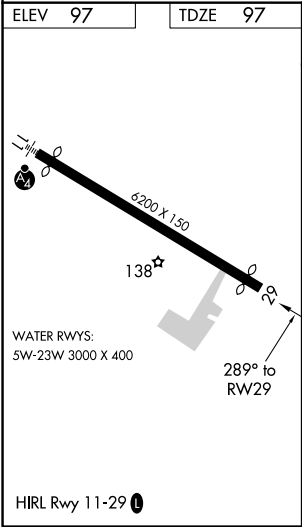
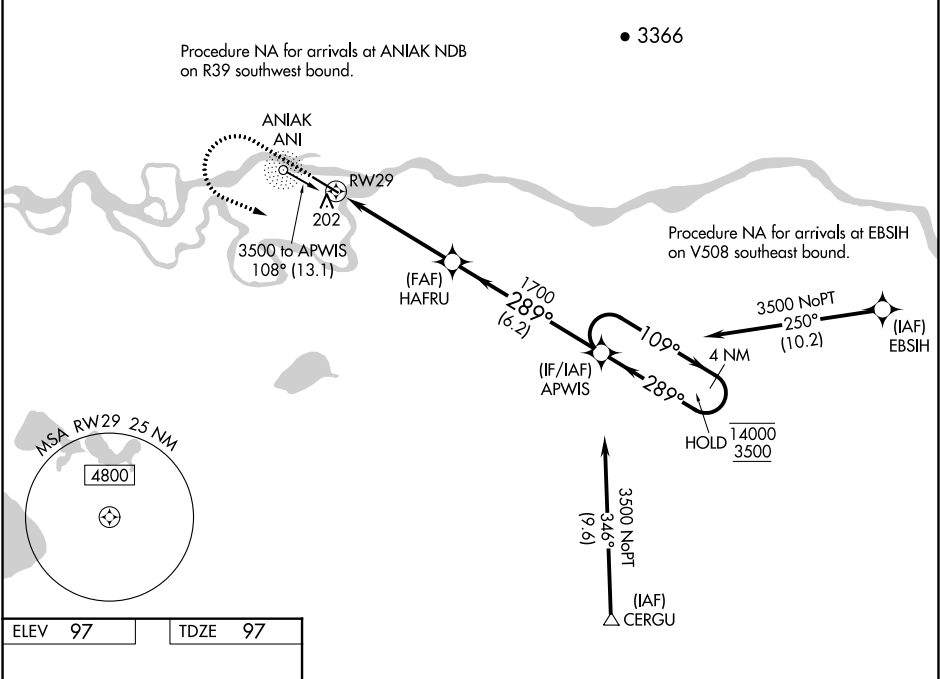


WAAS CH 86538 W29A	APP CRS 289°	Rwy Idg TDZE Apt Elev	5800 97 97
--	------------------------	-----------------------------	---------------------------------------

RNAV (GPS) RWY 29

ANIAK (ANI)(PANI)

RNP APCH. ❗ Circling NA north of Rwy 11-29. Rwy 29 helicopter visibility reduction below ¾ SM NA. For uncompensated Baro-VNAV systems, LNAV/VNAV NA below -18°C or above 54°C. ❄ -38°C		MISSED APPROACH: Climb to 1500 then climbing left turn to 3500 direct APWIS and hold.	
AWOS-3P 124.3	ANCHORAGE CENTER 118.15 251.05	CLNC DEL 118.15	CTAF 122.1



1500		3500	APWIS		
*LNAV only		HAFRU		APWIS	
*1.3 NM to RWY 29		1700		4 NM Holding Pattern	
RWY 29		289°		109° → 14000	
1.3 NM		3.6 NM		← 289° 3500	
		6.2 NM		GP 3.00°	
				TCH 52	
CATEGORY	A	B	C	D	
LPV DA	347-1 250 (300-1)				
LNAV/ VNAV DA	460-1 363 (400-1)				
LNAV MDA	560-1	463 (500-1)	560-1 ¾	463 (500-1 ¾)	
CIRCLING	560-1 463 (500-1)	620-1 523 (600-1)	860-2 ¼ 763 (800-2 ¼)	1200-3 1103 (1200-3)	