

WAAS CH 57915 W02B	APP CRS 020°	Rwy Idg 11050 TDZE 439 Apt Elev 439
--	------------------------	--

RNAV (GPS) Y RWY 2L
FAIRBANKS INTL (FAI) (PAFA)

RNP APCH.

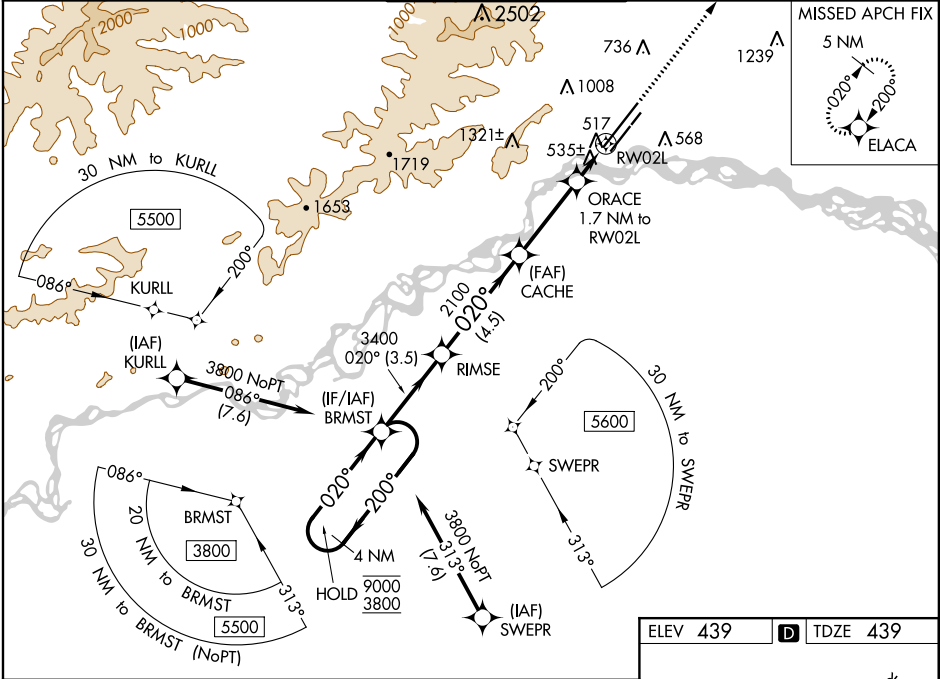
V Circling NA west of Rwy 2L-20R. Circling NA to Rwy 2W and 20W.
-32°C For uncompensated Baro-VNAV systems, LNAV/VNAV NA below -19°C or above 54°C. For inop ALS, increase LNAV/VNAV all Cats visibility to RVR 4500 and LNAV Cat C/D visibility to RVR 5500.

ALS-F-2

A

MISSED APPROACH: Climb to 4900 direct ELACA and hold, continue climb-in hold to 4900.

ATIS 124.4	FAIRBANKS APP CON 125.35 363.2	FAIRBANKS TOWER 118.3 257.8	GND CON 121.9	CLNC DEL 127.6
----------------------	--	---------------------------------------	-------------------------	--------------------------



4 NM Holding Pattern

BRMST

RIMSE

CACHE

ORACE 1.7 NM to RW02L

*LNAV only

*0.9 NM to RW02L

*1020

RW02L

ELACA

4900

GP 3.00° TCH 56

3.5 NM 4.5 NM 3.4 NM 0.8 0.9

CATEGORY	A	B	C	D
LPV DA	639/18 200 (200-½)			
LNAV/ VNAV DA	720/24 281 (300-½)			
LNAV MDA	800/24 361 (400-½)	800/40 361 (400-¾)		
CIRCLING	880-1 441 (500-1)	900-1 461 (500-1)	900-1½ 461 (500-1½)	1020-2 581 (600-2)

ELEV 439 **D** TDZE 439

AK, 05 NOV 2020 to 31 DEC 2020

AK, 05 NOV 2020 to 31 DEC 2020