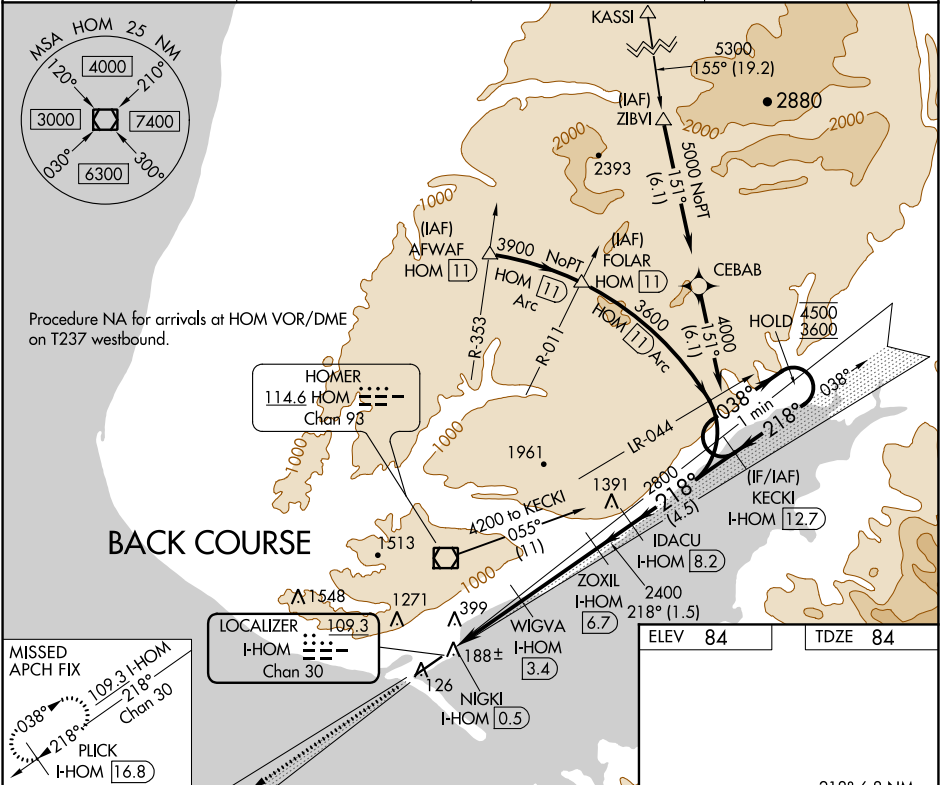


LOC/DME I-HOM	APP CRS	Rwy Idg	6701
109.3	218°	TDZE	84
Chan 30		Apt Elev	84

LOC BC RWY 22
HOMER (HOM) (PAHO)

DME required. From KASSI: RNAV 1-GPS required.	MALSR	MISSED APPROACH: Climb to 2600 on I-HOM localizer SW course 218° to PUCK/16.8 DME and hold.
Inop table does not apply. Rwy 22 helicopter visibility reduction below ¾ SM NA. Circling NA northwest of Rwy 4-22. Circling NA to waterways 6W and 24W.		

AFIS 135.65	ANCHORAGE CENTER 125.9 270.3	HOMER RADIO 123.6 (CTAF) 0	UNICOM 122.7 123.0 123.05
----------------	---------------------------------	-------------------------------	------------------------------



MISSED APCH FIX 109.3 I-HOM 218° Chan 30 PUCK I-HOM 16.8	2600 I-HOM SW crs 218°	Use I-HOM DME when on the localizer course.	IDACU I-HOM 8.2	KECKI I-HOM 12.7	One Minute Holding Pattern
NIGKI I-HOM 0.5	WIGVA I-HOM 3.4	ZOXIL I-HOM 6.7	WIGVA I-HOM 6.7	218° 6.8 NM from FAF	
1260	2400	2800	4500	3600	
0.6	2.9 NM	3.3 NM	1.5 NM	4.5 NM	
CATEGORY	A	B	C	D	
S-LOC 22	440-1	356 (400-1)			
CIRCLING	500-1 416 (500-1)	540-1 456 (500-1)	540-1½ 456 (500-1½)	760-2¼ 676 (700-2¼)	

AK, 05 NOV 2020 to 31 DEC 2020

AK, 05 NOV 2020 to 31 DEC 2020