

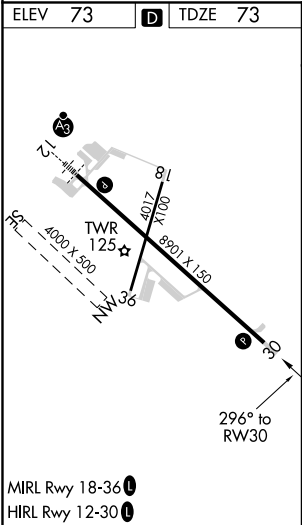
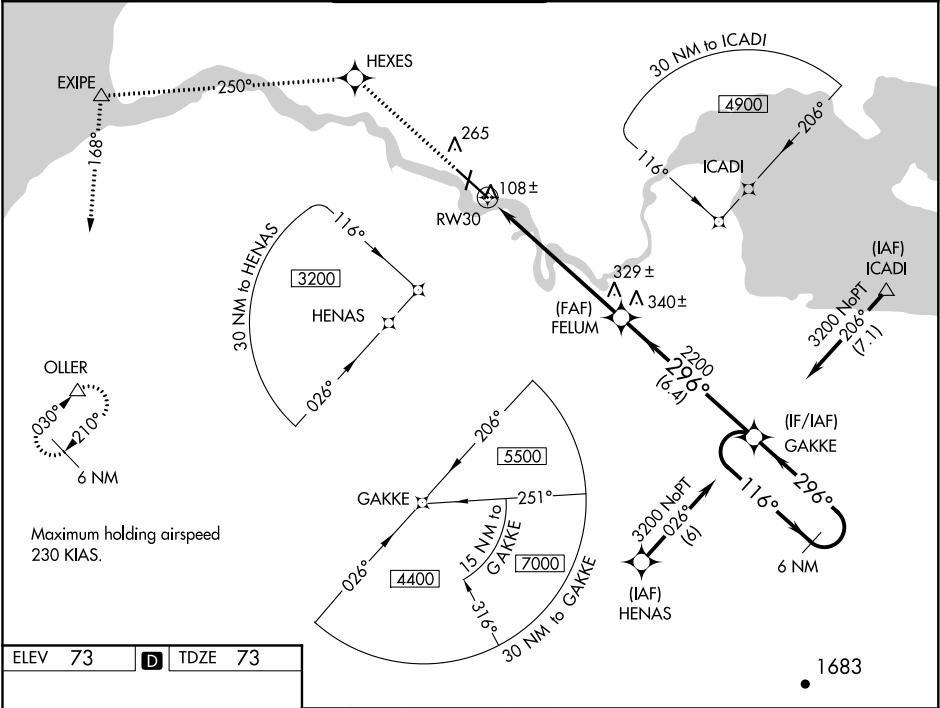
WAAS CH <b>77908</b> <b>W30A</b>	APP CRS <b>296°</b>	Rwy Idg TDZE <b>73</b> Apt Elev <b>73</b>
--	------------------------	---


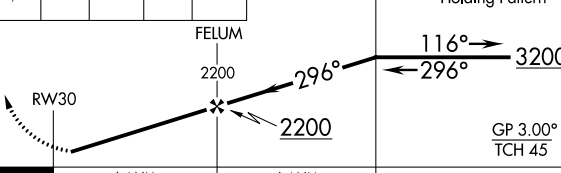
RNAV (GPS) RWY 30

KING SALMON (AKN)(PAKN)

<div><div><div></div><div></div></div><div><div></div><div></div></div></div> <div><div>For uncompensated Baro-VNAV systems, LNAV/VNAV NA below -25°C (-13°F) or above 49°C (120°F). DME/DME RNP-0.3 NA. Visibility reduction by helicopters NA.</div></div>	MISSED APPROACH: Climb to 3000 direct HEXES and via 250° track to EXIPE and via 168° track to OLLER and hold.
--	---

ATIS <b>128.8</b>	ANCHORAGE CENTER <b>124.8 354.0</b>	KING SALMON TOWER* <b>118.3 279.5</b>	GND CON <b>121.9</b>	UNICOM <b>122.95</b>	CTAF <b>121.9 352.05</b>
----------------------	--	--	-------------------------	-------------------------	-----------------------------



3000	HEXES	EXIPE	OLLER			
↑		250° tr	△	168° tr	△	
						
CATEGORY		A	B	C	D	E
LPV DA	323-1 250 (300-1)					
LNAV/VNAV DA	358-1 285 (300-1)					
LNAV MDA	600-1 527 (600-1)		600-1½ 527 (600-1½)	600-1¾ 527 (600-1¾)		
CIRCLING	600-1 527 (600-1)		600-1½ 527 (600-1½)	640-2 567 (600-2)	720-2¼ 647 (700-2¼)	