

LOC/DME I-ADQ <b>110.9</b> Chan <b>46</b>	APP CRS <b>258°</b>	Rwy Idg <b>7534</b> TDZE <b>32</b> Apt Elev <b>79</b>
---	------------------------	---

ILS Y or LOC Y RWY 26  
KODIAK (ADQ)(PADQ)

DME required.

- T** Circling NA north of Rwy 8-26 and west of Rwy 1-19. Circling Rwy 1 NA at night.
- A** Circling NA to Rwy 8, 11 and 19. Rapidly rising terrain north, west, and south of airport. ILS unusable from 2 DME inbound.

**MISSED APPROACH:** Climbing left turn to 3900 on heading 079° then direct ODK VOR/DME and hold.

ATIS 134.45	ANCHORAGE CENTER 125.1 281.4	KODIAK TOWER* 119.8 (CTAF) 0 239.0	GND CON 121.9	UNICOM 122.8
----------------	---------------------------------	---------------------------------------	------------------	-----------------

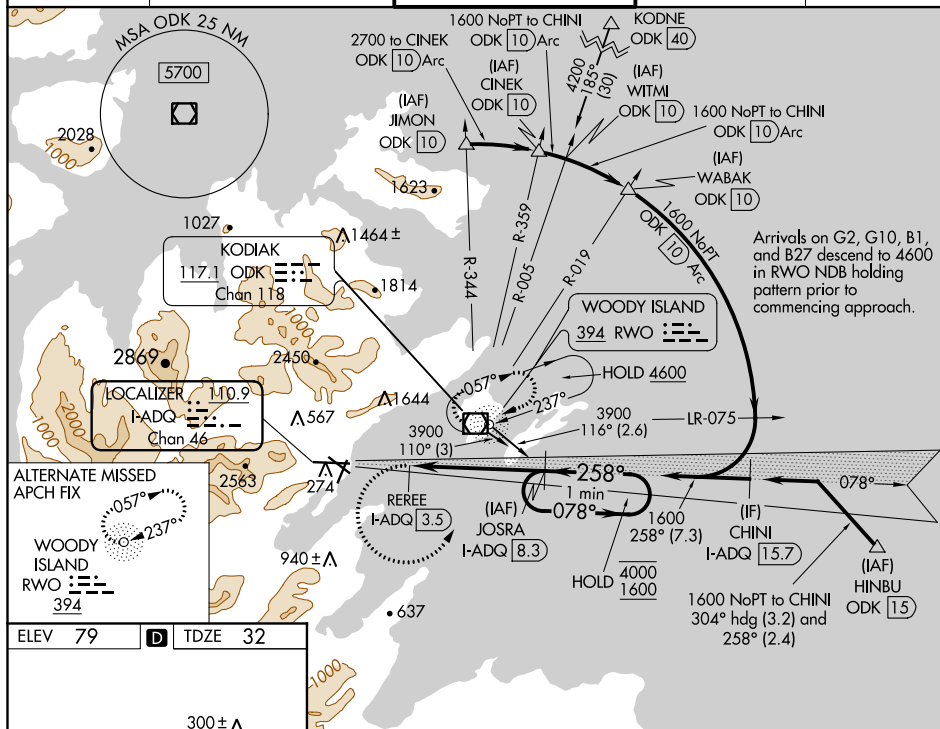


Figure 1-1 illustrates the I-ADQ DME system on the localizer course. The diagram shows a 3D perspective of the I-ADQ DME system. A 2D plan view below shows the localizer course (258°) and the DME arc (1600). The 3D view shows the DME arc (1600) and the localizer course (258°) with a 0.8% up gradient. The 2D plan view also shows the DME arc (1600) and the localizer course (258°) with a 0.3% up gradient. The 3D view shows the DME arc (1600) and the localizer course (258°) with a 0.8% up gradient. The 2D plan view also shows the DME arc (1600) and the localizer course (258°) with a 0.3% up gradient.