

KODIAK, ALASKA

AL-1238 (FAA)

20030

WAAS CH <b>93941</b> <b>W26A</b>	APP CRS <b>239°</b>	Rwy Idg <b>7534</b> TDZE <b>32</b> Apt Elev <b>79</b>
--	------------------------	---

## RNAV (GPS) RWY 26

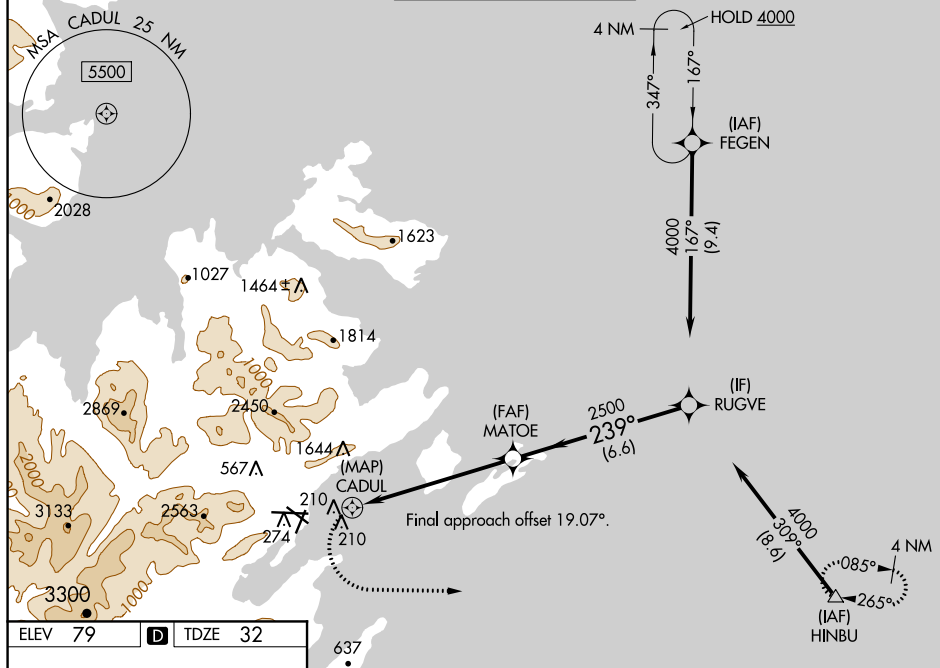
KODIAK (ADQ)(PADQ)

RNP APCH.

- T** Circling NA north of Rwy 8-26 and west of Rwy 1-19.  
**A** Procedure NA at night. Circling to Rwy 8, 11 and 19 NA.  
 Rapidly rising terrain north, west, and south of airport.

**MISSED APPROACH:** (Do not exceed 210K until HINBU)  
Climbing left turn to 4000 direct HINBU and hold, continue climb-in-hold to 4000. \*Missed approach requires minimum climb of 357 feet per NM to 1500.

ATIS 134.45	ANCHORAGE CENTER 125.1 281.4	KODIAK TOWER * 119.8 (CTAF) 0 239.0	GND CON 121.9	UNICOM 122.8
----------------	---------------------------------	--	------------------	-----------------



The diagram illustrates the layout of the rail yard, including the following details:

- Tracks:**
  - Top track: 300 ± Δ
  - Second track from top: 240 ± Δ
  - Third track from top: 7534 X 150
  - Fourth track from top: 5400 X 150
  - Fifth track from top: 5010 X 150
  - Bottom track: 26
- Signals:**
  - Star symbol (☆) with number 182
  - Square symbol (■) with number 157
  - Circle symbol (●) with number 26
  - Circle symbol (●) with number 29
- Switches:**
  - Switch labeled "0.8% UP" between tracks 7534 X 150 and 5400 X 150.
  - Switch labeled "0.3% UP" between tracks 5400 X 150 and 5010 X 150.
- Other Features:**
  - A "TWR" (Tower) is located near the 157 signal.
  - A "REIL" (Railroad) line is indicated at the bottom left.
  - A "HRL" (Highway) line is indicated at the bottom right.

VGS and descent angles not coincident (VGS Angle 2.05/TCH 34).

KODIAK, ALASKA  
Amdt 3A 20JUN19

57°45'N-152°30'W

KODIAK (ADQ)(PADQ)

## RNAV (GPS) RWY 26

AK, 05 NOV 2020 to 31 DEC 2020