

VOR/DME ODK	APP CRS	Rwy Idg	7534
117.1	237°	TDZE	32
Chan 118		Apt Elev	79

VOR RWY 26

KODIAK (ADQ)(PADQ)

⚠

Circling NA north of Rwy 8-26 and west of Rwy 1-19.

⚠

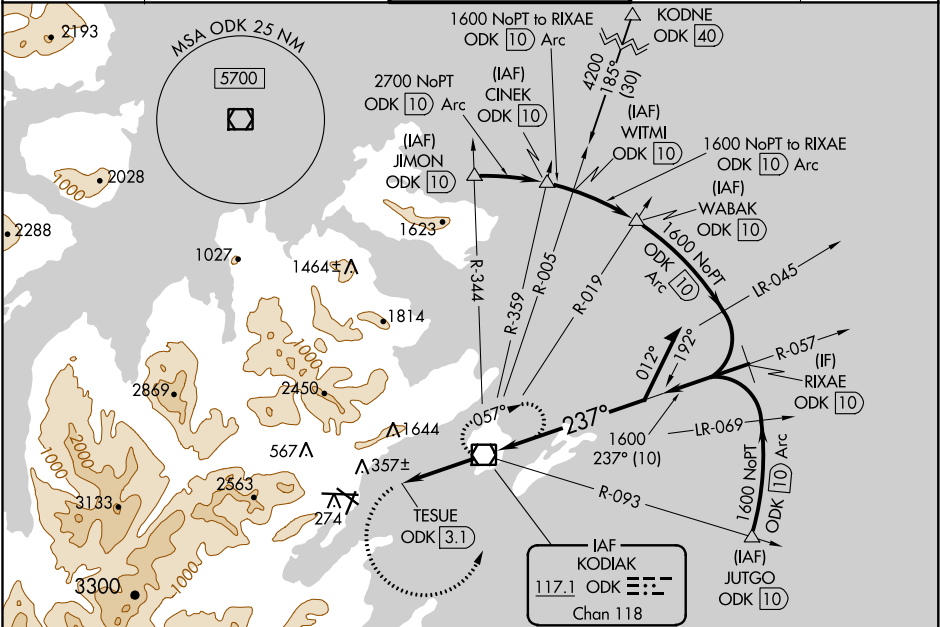
Circling Rwy 1 NA at night. Circling NA to Rwys 8, 11 and 19.

⚠

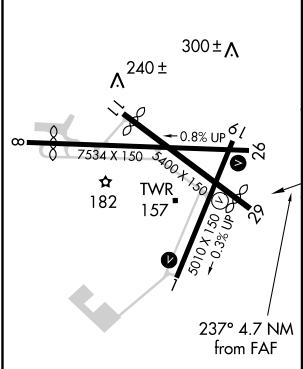
Rapidly rising terrain north, west, and south of airport.

MISSED APPROACH: Climbing left turn to 3700 on heading 079° then left turn direct ODK VOR/DME and hold.

ATIS	ANCHORAGE CENTER	KODIAK TOWER*	GND CON	UNICOM
134.45	125.1 281.4	119.8 (CTAF) 239.0	121.9	122.8



ELEV 79	TDZE 32
---------	---------



REIL Rwy's 1 and 26 L					
HIRL Rwy's 1-19, 8-26, and 11-29 L					
FAF to MAP 3.1 NM					
Knots	60	90	120	150	180
Min:Sec	3:06	2:04	1:33	1:14	1:02

		VGSI and descent angles not coincident (VGSI Angle 2.05/TCH 54)		
CATEGORY	A	B	C	D
S-26	660-2 628 (600-2)			
CIRCLING	660-2 581 (600-2)	720-2 641 (700-2)	1140-3 1061 (1100-3)	NA