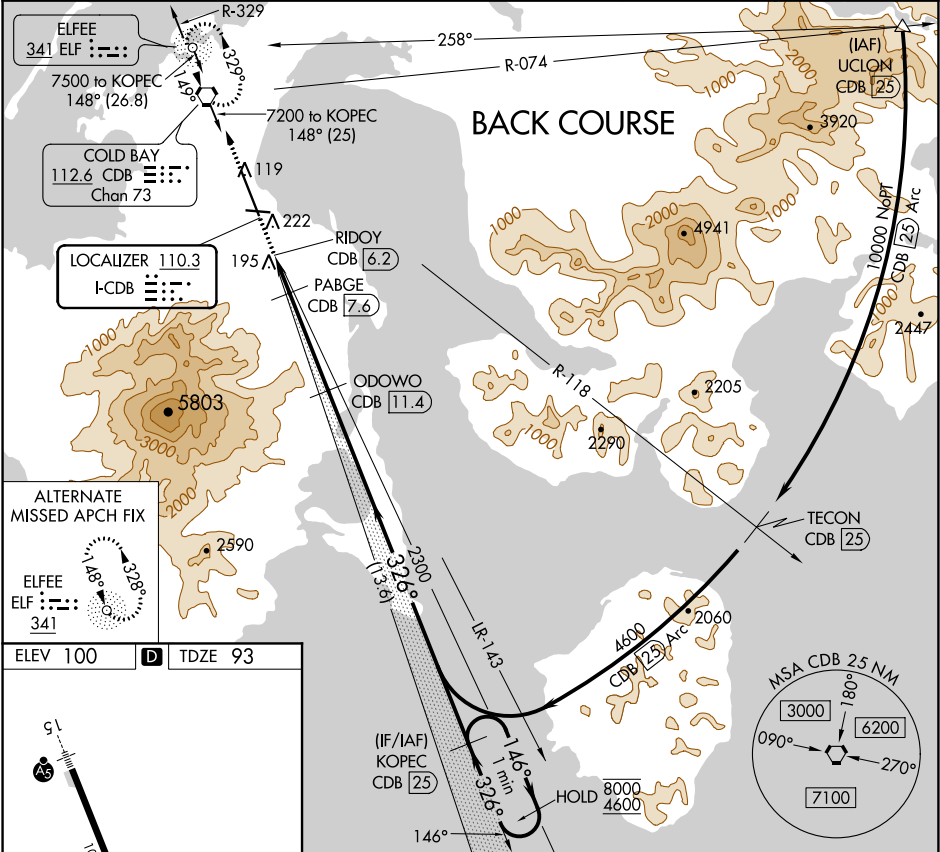


LOC I-CDB 110.3	APP CRS 326°	Rwy Idg TDZE Apt Elev	10179 93 100
---------------------------	------------------------	-----------------------------	---

LOC BC RWY 33
COLD BAY (CDB) (PACD)

DME required.	MISSED APPROACH: Climb to 4000 direct CDB VORTAC and hold, continue climb-in-hold to 4000.
⚠ Circling NA for Cat A southwest of Rwy 15-33 at night. DME from CDB VORTAC. ⚠ Simultaneous reception of I-CDB and CDB DME required. Circling NA for Cats B/C/D southwest of Rwy 15-33.	

ASOS 135.75	ANCHORAGE CENTER 118.5 278.3	COLD BAY RADIO 123.6 (CTAF) 0
-----------------------	--	---



<p>326° 6.8 NM from FAF</p> <p>HIRL all Rwy's</p>	4000	CDB	VGSI and descent angles not coincident (VGSI Angle 3.00/TCH 36).		COPEC CDB 25	One Minute Holding Pattern
			PABGE CDB 7.6	ODOWO CDB 11.4		146° → 8000 ← 326° 4600
			RIDDOY CDB 6.2	3.00° TCH 55	326° 2300	Disregard GS indications. Localizer unusable inside CDB VORTAC 6.2 DME.
				1100		
				1.5 NM	1.5 NM	3.8 NM
CATEGORY	A		B		C	D
S-33			420-1 7/8		327 (400-1 7/8)	
CIRCLING	540-1 7/8 440 (500-1 7/8)		560-1 7/8 460 (500-1 7/8)		860-2 1/2 760 (800-2 1/2)	

AK, 05 NOV 2020 to 31 DEC 2020

AK, 05 NOV 2020 to 31 DEC 2020