

**TOP ALTITUDE:  
ASSIGNED BY ATC**

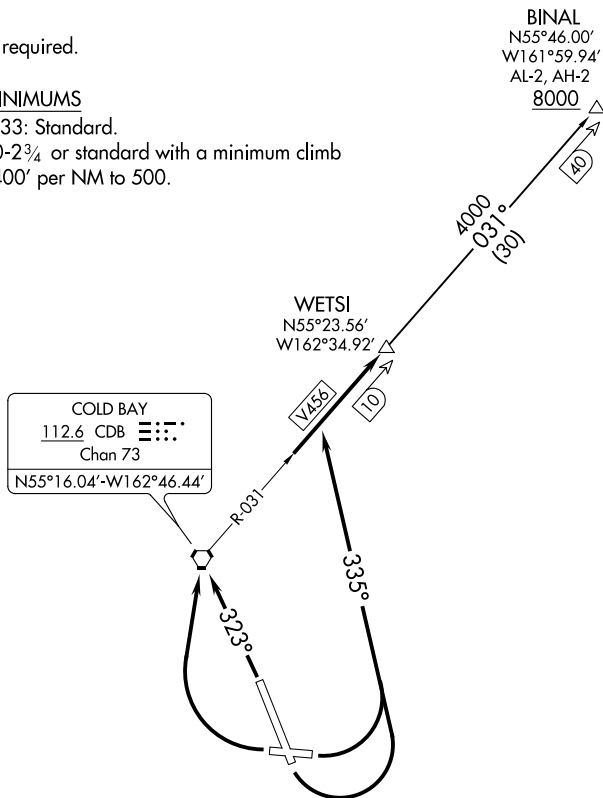
ANCHORAGE CENTER  
118.5 278.3  
COLD BAY RADIO  
123.6

NOTE: DME required.

## TAKEOFF MINIMUMS

Rwys 8, 15, 33: Standard.

Rwy 26: 900-2¾ or standard with a minimum climb of 400' per NM to 500.



NOTE: Chart not to scale.



## DEPARTURE ROUTE DESCRIPTION

TAKEOFF RUNWAYS 8, 15: Climbing left turn heading 335°, thence . . . .

TAKEOFF RUNWAY 26: Climbing right turn direct CDB VORTAC, thence . . .

TAKEOFF RUNWAY 33: Climb heading 323° direct CDB VORTAC, thence . . .

... intercept CDB VORTAC R-031 to join V456 northeast bound to WETSI  
maintain assigned altitude.

**BINAL TRANSITION (WETSI2.BINAL):** From over WETSI on CDB R-031 to BINAL.