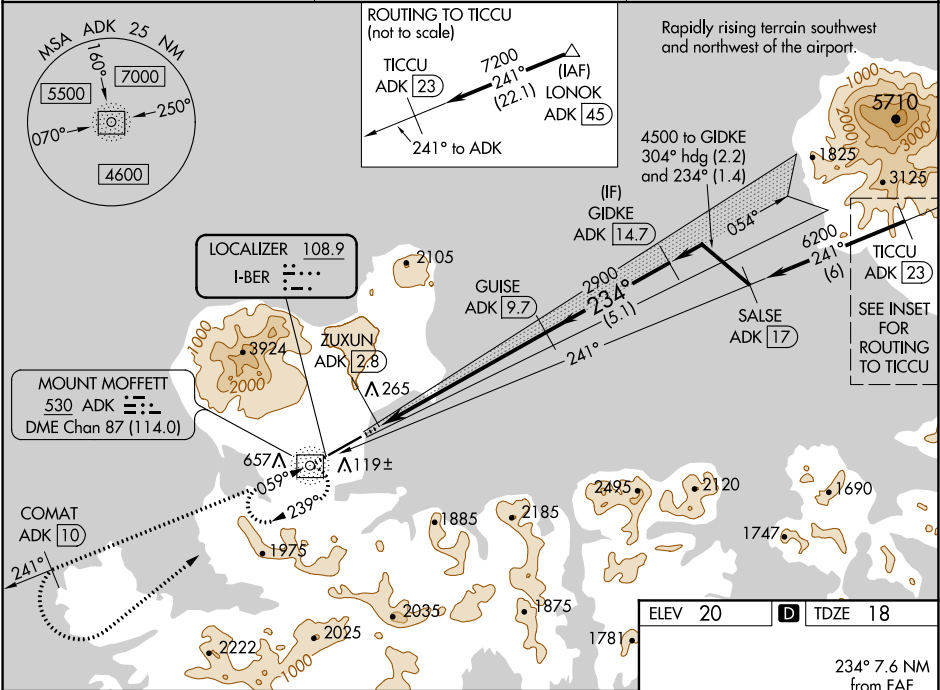


LOC I-BER	APP CRS	Rwy Idg	6190
108.9	234°	TDZE	18
		Apt Elev	20

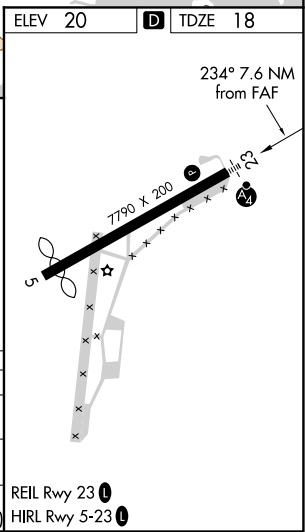
ILS Y or LOC Y RWY 23
ADAK (ADK) (PADK)

ADF and DME required.	MALS	MISSED APPROACH: Climb to 5400 direct ADK NDB/DME and on the 241° bearing from ADK NDB/DME to COMAT/ADK 10 DME and left turn direct ADK NDB/DME and hold.
<p>⚠ Circling NA at night. Circling NA northwest of Rwy 5-23. Rwy 23 helicopter visibility reduction below ¾ SM NA. DME from ADK NDB/DME. Simultaneous reception of I-BER and ADK DME required. Cat E for USAF/USN use only.</p>		

AWOS-3P 134.5	ANCHORAGE CENTER 126.4 254.3	CTAF 122.9 0
------------------	---------------------------------	-----------------



5400	ADK	ADK 241°	COMAT ADK 10	ADK				
↑								
*LOC only								
ADK NDB/DME	ZUXUN ADK 2.8		*ADK 5.9	2900	234°		4500	
					2900		GS 3.50° TCH 53	
0.8					3.1 NM		3.8 NM	
					5.1 NM			
CATEGORY	A		B	C	D		E	
S-ILS 23	1572-5 1554 (1600-5)							
S-LOC 23	1520-1¼ 1502 (1500-1¼)		1520-1½ 1502 (1500-1½)		1520-3 1502 (1500-3)			
CIRCLING	1520-1¼ 1500 (1500-1¼)		1520-1½ 1500 (1500-1½)		1520-3 1500 (1500-3)	2400-3 2380 (2400-3)	2440-3 2420 (2500-3)	



AK, 05 NOV 2020 to 31 DEC 2020

AK, 05 NOV 2020 to 31 DEC 2020