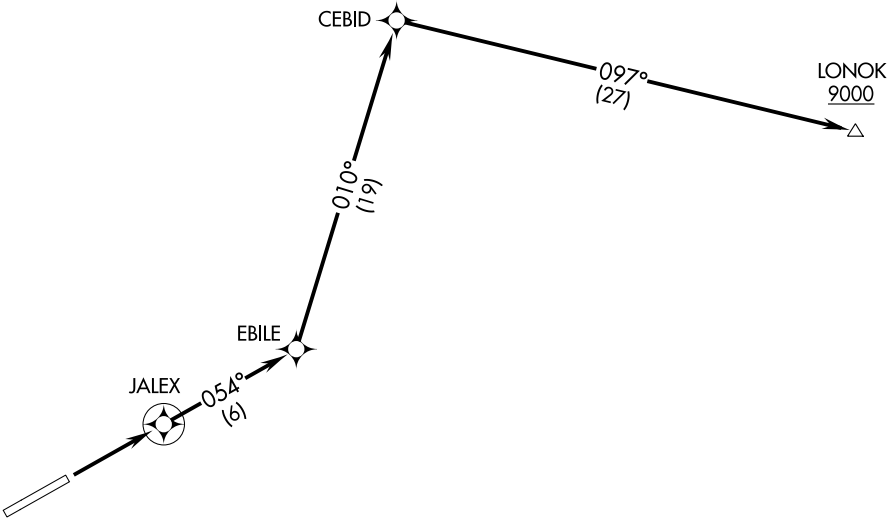


ANCHORAGE CENTER  
126.4 254.3  
CTAF  
122.9

TOP ALTITUDE:  
ASSIGNED BY ATC



NOTE: GPS required.  
NOTE: RNAV 1.

TAKEOFF MINIMUMS  
Rwy 23: NA-ATC.  
Rwy 5: Standard with minimum climb of 253' per NM to 900.

NOTE: Chart not to scale.

▼

DEPARTURE ROUTE DESCRIPTION

**TAKEOFF RUNWAY 5:** Climb to 9000 or ATC assigned higher altitude direct JALEX then on track 054° to EBILE, then on track 010° to CEBID, then on track 097° to cross LONOK at or above 9000 before proceeding on course.