

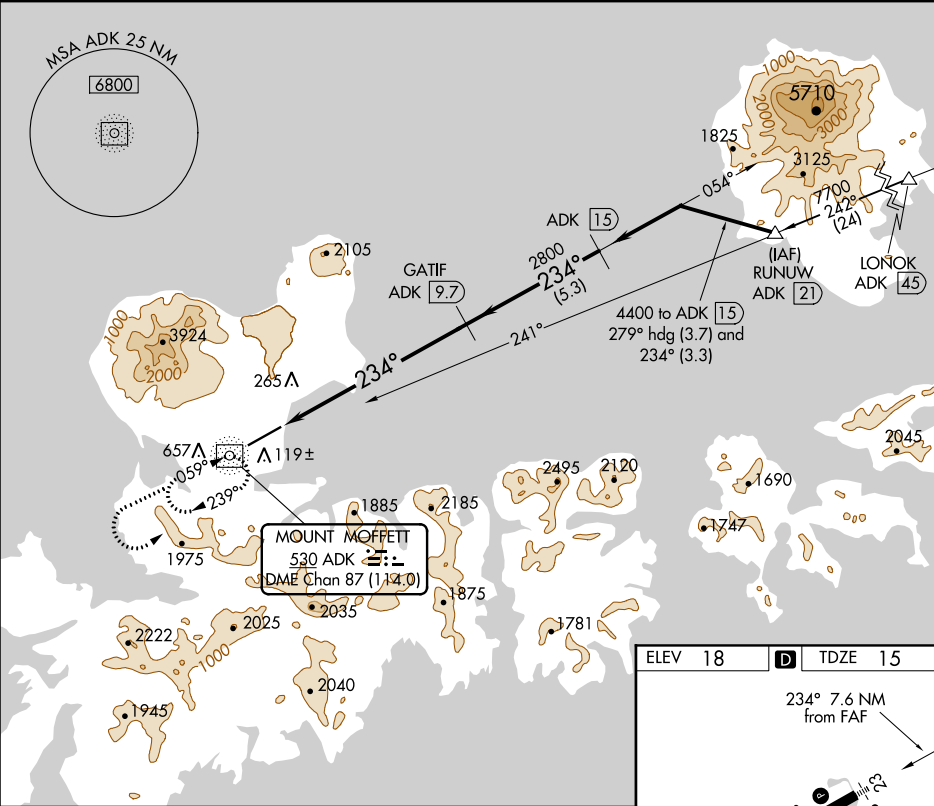
NDB/DME ADK	APP CRS	Rwy Idg	6190
530	234°	TDZE	15
Chan 87 (114.0)		Apt Elev	18

NDB/DME RWY 23

ADAK (ADK)(PADK)

<div><div><div></div><div></div></div><div>Circling not authorized at night.</div></div>	<div>MALS<div></div></div> <div>MISSED APPROACH: Climb to 5000 via direct ADK NDB/DME and ADK NDB/DME 234° bearing, then climbing left turn to 9000 direct ADK NDB/DME and hold.</div>
--	--

AWOS-3P 134.5	ANCHORAGE CENTER 126.4 254.3	CTAF 122.9
------------------	---------------------------------	---------------



5000

9000

ADK

VGSI and descent angles not coincident  
(VGSI Angle 3.50/TCH 53).

ADK 234°

ADK NDB/DME

ADK 2.7

ADK 15

GATIF  
ADK 9.7

4400

2800

234°

≤ 3.38°  
TCH 43

Procedure  
Turn NA

0.6

7 NM

5.3 NM

CATEGORY	A	B	C	D
S-23	1600/60 1585 (1600-1¼)	1600-1½ 1585 (1600-1½)	1600-3	1585 (1600-3)
CIRCLING	1600-1¼ 1582 (1600-1¼)	1600-1½ 1582 (1600-1½)	1600-3	1582 (1600-3)

