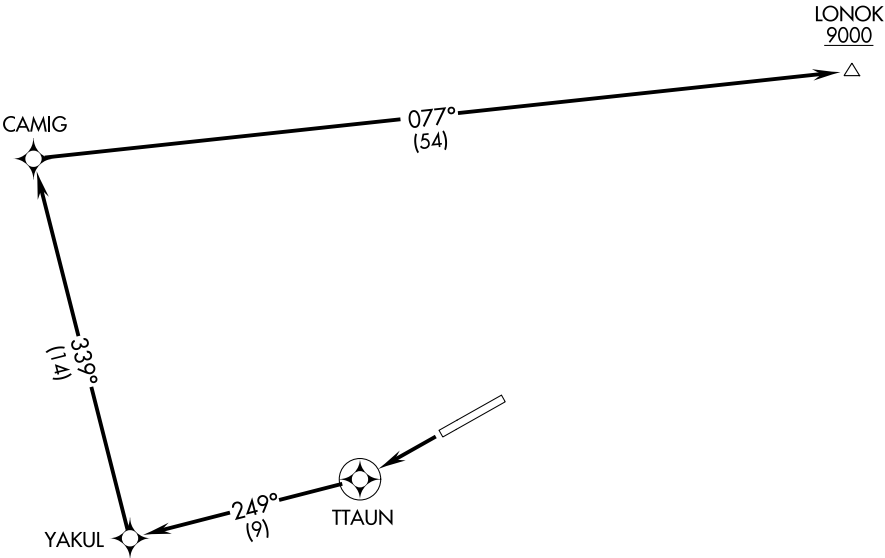


ANCHORAGE CENTER
126.4 254.3
CTAF
122.9

**TOP ALTITUDE:
ASSIGNED BY ATC**



NOTE: GPS required.
NOTE: RNAV 1.

TAKEOFF MINIMUMS
Rwy 5: NA-ATC.
Rwy 23: 300-1 with minimum climb of 400' per NM to 1600.

NOTE: Chart not to scale.



DEPARTURE ROUTE DESCRIPTION

TAKEOFF RUNWAY 23: Climb to 9000 or ATC assigned higher altitude direct TTAUN, then on track 249° to YAKUL, then track 339° to CAMIG, then on track 077° to LONOK before proceeding on course.

AK, 05 NOV 2020 to 31 DEC 2020

AK, 05 NOV 2020 to 31 DEC 2020