

NDB/DME ILI 411	APP CRS 006°	Rwy Idg 4800 TDZE 179 Apt Elev 192
Chan 91 (114.4)		

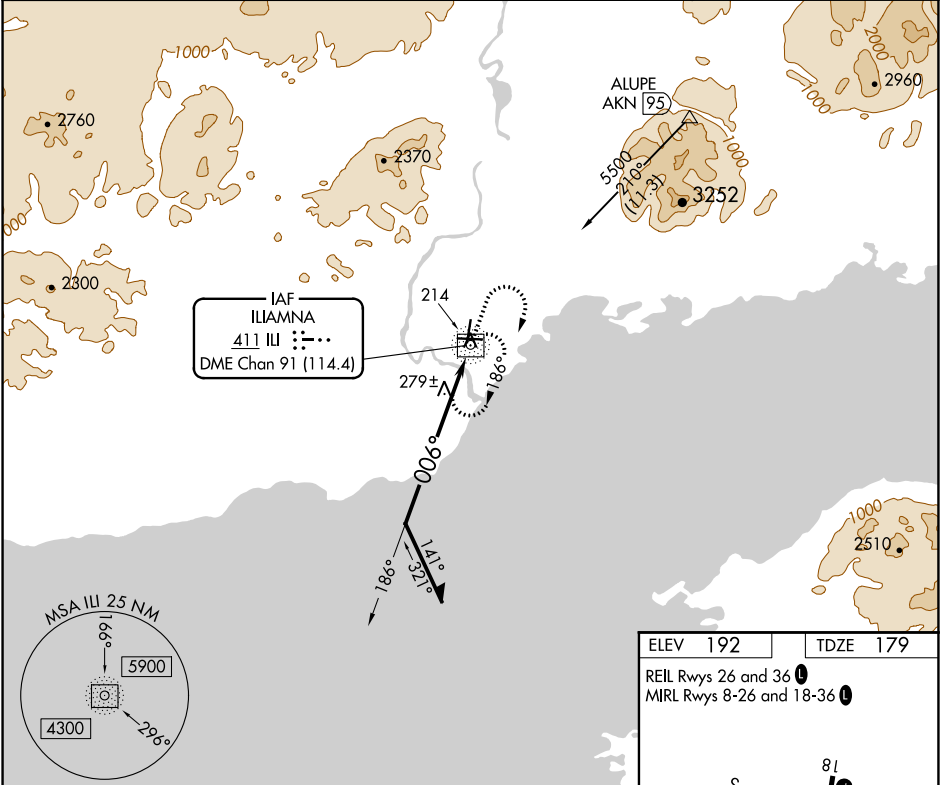
NDB RWY 36
ILIAMNA (ILI) (PAIL)

 -29°C

Circling Rwy 18 NA at night.
Rwy 36 helicopter visibility reduction below ¾ SM NA.

MISSED APPROACH: Climb to 1100 then climbing right turn to 3000 via heading 186° then climbing right turn to 4800 direct ILI NDB/DME and hold, continue climb-in-hold to 4800. When authorized by ATC, climb-in-hold to 7000.

AFIS 134.95	ANCHORAGE CENTER 118.8	ILIAMNA RADIO 123.6 (CTAF) 0
-----------------------	----------------------------------	--




Remain within 10 NM

1900

186°

006°

ILI NDB/DME 2400

	1100	3000	4800	ILI
	↑	hdg 186°		

CATEGORY	A	B	C	D
S-36	680-1	501 (500-1)	680-1½	501 (500-1½)
CIRCLING	740-1	548 (600-1)	800-1¾ 608 (700-1¾)	1700-3 1508 (1600-3)

ELEV 192	TDZE 179
----------	----------

REIL Rwy 26 and 36

MIRL Rwy 8-26 and 18-36

WATER RWYS:
N-S 2892 X 400
E-W 2998 X 400

006° to NDB