

WAAS CH <b>82110</b> <b>W36A</b>	APP CRS <b>355°</b>	Rwy Idg <b>4800</b> TDZE <b>179</b> Apt Elev <b>192</b>
--	------------------------	---

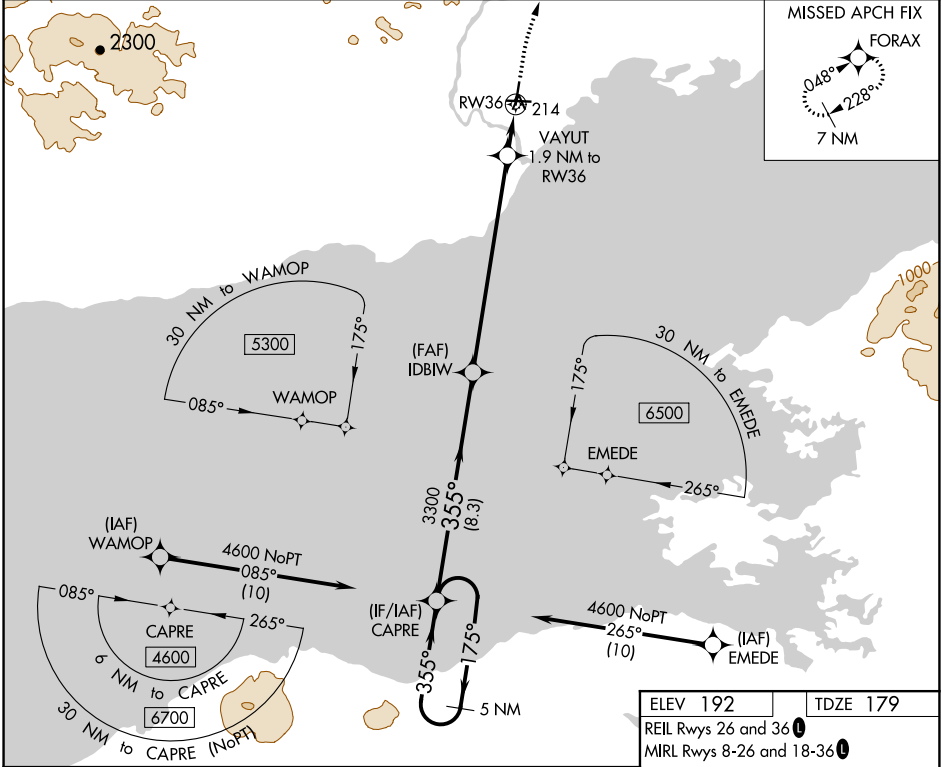
RNAV (GPS) RWY 36

ILIAMNA (ILI) (PAIL)

For uncompensated Baro-VNAV systems, procedure NA below -21°C (-5° F) or above 54°C (130°F). When local altimeter setting not received, procedure NA. DME/DME RNP-0.3 NA.

MISSED APPROACH: Climb to 640 then climbing right turn to 8400 direct FORAX and hold, continue climb-in-hold to 8400.

AFIS <b>134.95</b>	ANCHORAGE CENTER <b>118.8</b>	ILIAMNA RADIO <b>123.6</b> (CTAF) <b>0</b>
-----------------------	----------------------------------	---



5 NM Holding Pattern

GP 3.00°  
TCH 32

4600 ← 175°  
355° →

CAPRE

IDBIW

VAYUT 1.9 NM to RW36

\*1 NM to RW36

RW36

\*800

8.3 NM

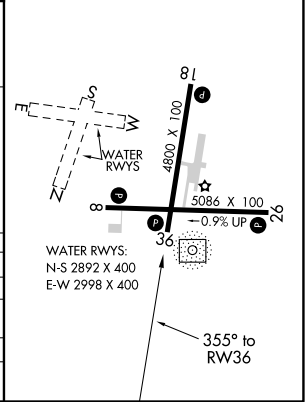
7.8 NM

0.9 NM

1 NM

\*LNAV only

CATEGORY	A	B	C	D
LPV DA		429-1	250 (300-1)	
LNAV/VNAV DA		462-1	283 (300-1)	
LNAV MDA		540-1	361 (400-1)	
CIRCLING	740-1	548 (600-1)	800-1 <sup>3</sup> / <sub>4</sub> 608 (700-1 <sup>3</sup> / <sub>4</sub> )	1700-3 1508 (1600-3)



AK, 05 NOV 2020 to 31 DEC 2020

AK, 05 NOV 2020 to 31 DEC 2020