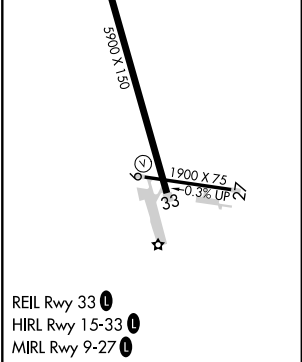
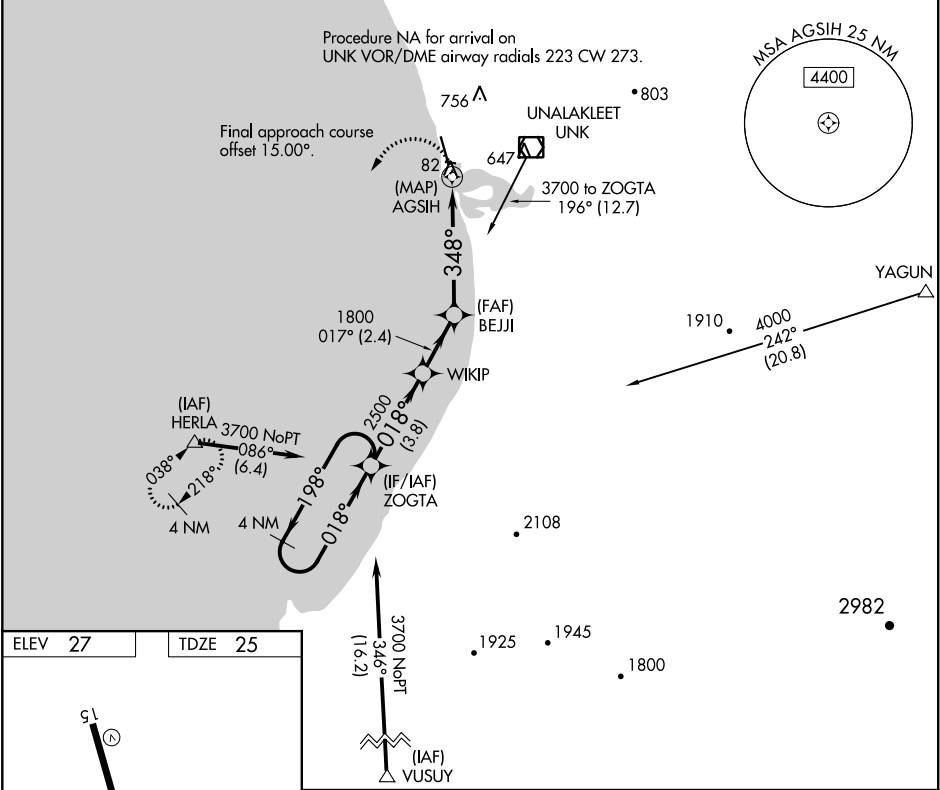


APP CRS	Rwy Idg	5900
348°	TDZE	25
	Apt Elev	27

RNAV (GPS) RWY 33  
UNALAKLEET (UNK)(PAUN)

<div><div>▼</div><div>▲</div><div>⚠</div><div>-39°C</div></div>	<div>Circling NA east of Rwy 15-33. Circling Rwy 9 NA at night. Rwy 33 helicopter visibility reduction below ¾ SM NA. DME/DME RNP- 0.3 NA.</div>	<div>MISSED APPROACH: Climbing left turn to 3700 direct HERLA and hold, continue climb-in-hold to 3700.</div>
---	--	---

AWOS-3P 132.25	ANCHORAGE CENTER 135.7 335.5	NOME RADIO 122.3	CTAF 123.0
-------------------	---------------------------------	---------------------	---------------



4 NM Holding Pattern		ZOGTA		WIKIP		BEJJI		3700 HERLA	
3700		198°		018°		018°		017°	
2500		018°		017°		017°		348°	
1800		3.8 NM		2.4 NM		3.8 NM		1.2 NM to AGSIH	
CATEGORY		A		B		C		D	
LNAV MDA		600-1 575 (600-1)		600-1½ 575 (600-1½)					
CIRCLING		600-1 573 (600-1)		700-1 673 (700-1)		700-2 673 (700-2)		860-2¾ 833 (900-2¾)	

AK, 05 NOV 2020 to 31 DEC 2020

AK, 05 NOV 2020 to 31 DEC 2020