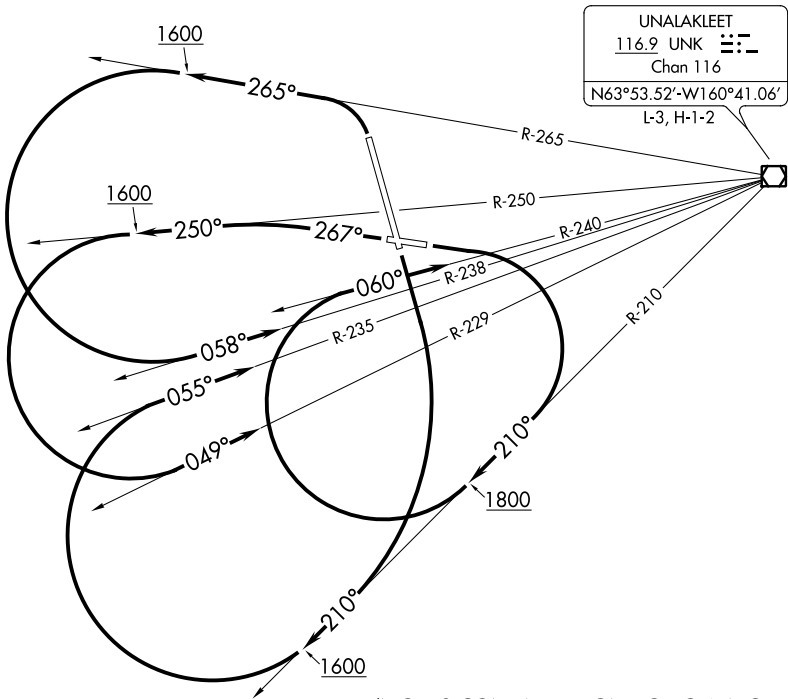


AWOS-3P  
132.25  
NOME RADIO  
122.3  
ANCHORAGE CENTER  
135.7 335.5

TAKEOFF MINIMUMS  
Rwys 15, 27: Standard.  
Rwy 9: 400-3 or standard with minimum climb of 220' per NM to 500.  
Rwy 33: 400-2¼ or standard with minimum climb of 320' per NM to 600.



NOTE: Chart not to scale.

(NOTES CONTINUED ON FOLLOWING PAGE)

DEPARTURE ROUTE DESCRIPTION

TAKEOFF RUNWAY 9: Climbing right turn to intercept UNK VOR/DME R-210 to 1800, then climbing right turn to intercept UNK VOR/DME R-240 to UNK VOR/DME before proceeding on course.

TAKEOFF RUNWAY 15: Climbing right turn to intercept UNK VOR/DME R-210 to 1600, then climbing right turn to intercept UNK VOR/DME R-235 to UNK VOR/DME before proceeding on course.

TAKEOFF RUNWAY 27: Climb on heading 267° and UNK VOR/DME R-250 to 1600, then climbing left turn to intercept UNK VOR/DME R-229 to UNK VOR/DME before proceeding on course.

TAKEOFF RUNWAY 33: Climbing left turn to intercept UNK VOR/DME R-265 to 1600, then climbing left turn to intercept UNK VOR/DME R-238 to UNK VOR/DME before proceeding on course.