

WAAS CH 86215 W07B	APP CRS 074°	Rwy Idg 10600 TDZE 128 Apt Elev 151
--	------------------------	--

RNAV (GPS) RWY 7L

TED STEVENS ANCHORAGE INTL (ANC) (PANC)

RNP APCH.

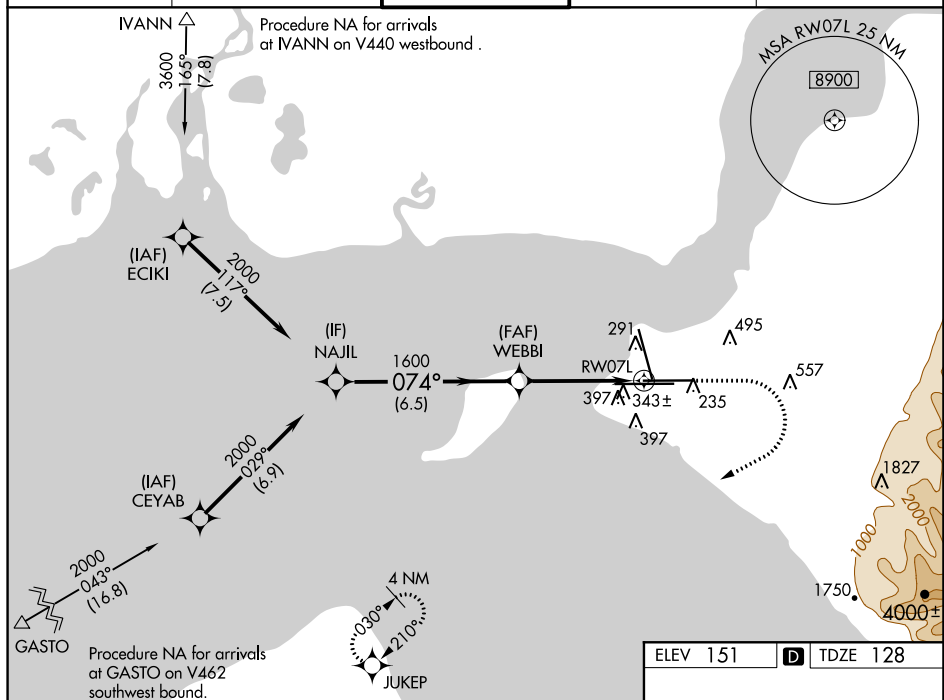
T For uncompensated Baro-VNAV systems, LNAV/VNAV NA below -18°C
A or above 54°C. For inop ALS, increase LNAV/VNAV all Cats and LNAV
 Cat C/D visibility to 1 $\frac{3}{8}$ SM.

MALSR



MISSED APPROACH: Climb to 800 then climbing right turn to 3000 direct JUKEP and hold.

D-ATIS 135.5	ANCHORAGE APP CON 118.6 290.5	ANCHORAGE TOWER 118.3 257.8	GND CON 121.9 338.25	CLNC DEL 119.4 323.1
-----------------	----------------------------------	--------------------------------	-------------------------	-------------------------



The diagram shows the NAJIL VOR/DME station at 2000 kHz. It indicates a glidepath not coincident with the RNAV glidepath (VGS Angle 3.00/TCH 63). The distance from NAJIL to WEBBI is 6.5 NM, and from WEBBI to RW07L is 3.2 NM. The distance from NAJIL to RW07L is 1.3 NM. The diagram also shows the GP 3.00° TCH 54 and the RNAV glidepath. A note indicates that the RNAV glidepath is only available for LNAV.

