

APP CRS 329°	Rwy Idg 10400 TDZE 121 Apt Elev 151
------------------------	--

RNAV (RNP) RWY 33

TED STEVENS ANCHORAGE INTL (ANC) (PANC)

RNP AR APCH. RF required.

T For uncompensated Baro-VNAV systems, procedure NA below -17°C or above 54°C.

MISSED APPROACH: Climb to 4000 on the RNAV missed approach route to BGQ VORTAC and hold.

D-ATIS
135.5

ANCHORAGE APP CON
118.6 290.5

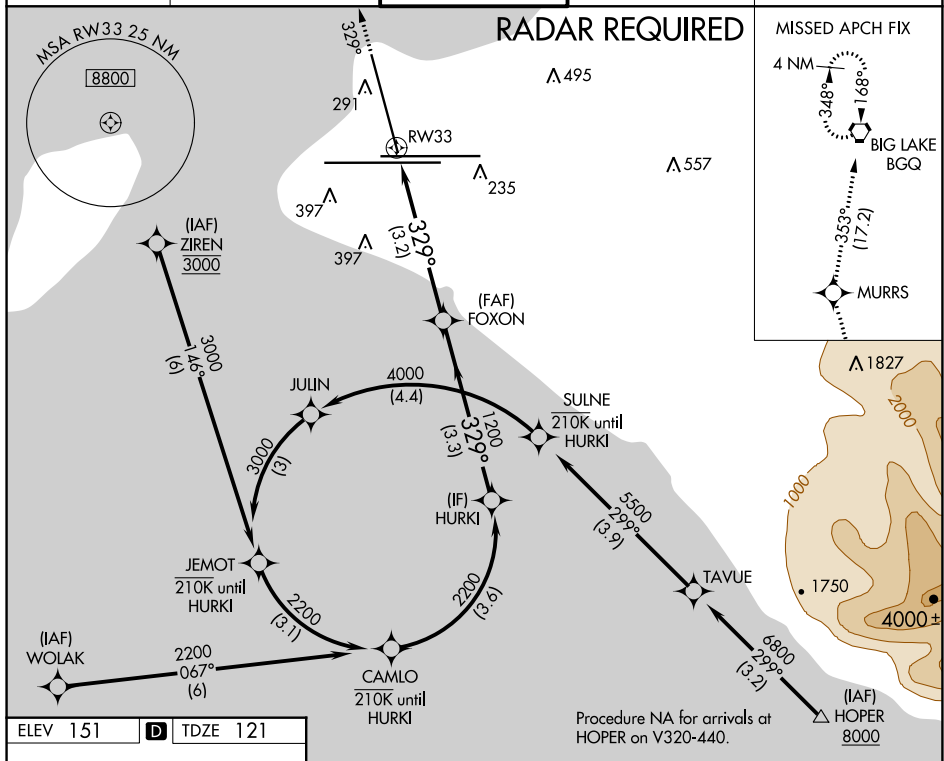
ANCHORAGE TOWER
118.3 257.8

GND CON
121.9 338.25

CLNC DEL
119.4 323.1

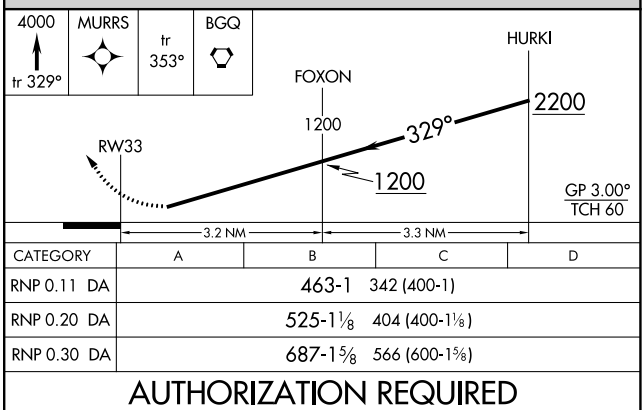
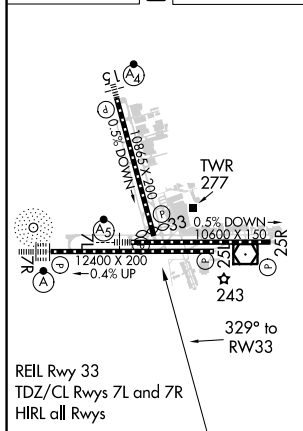
RADAR REQUIRED

MISSED APCH FIX



ELEV 151

D TDZE 121



ANCHORAGE, ALASKA

Amdt 1A 28FEB19

TED STEVENS ANCHORAGE INTL (ANC) (PANC)

61°10'N-150°00'W

RNAV (RNP) RWY 33