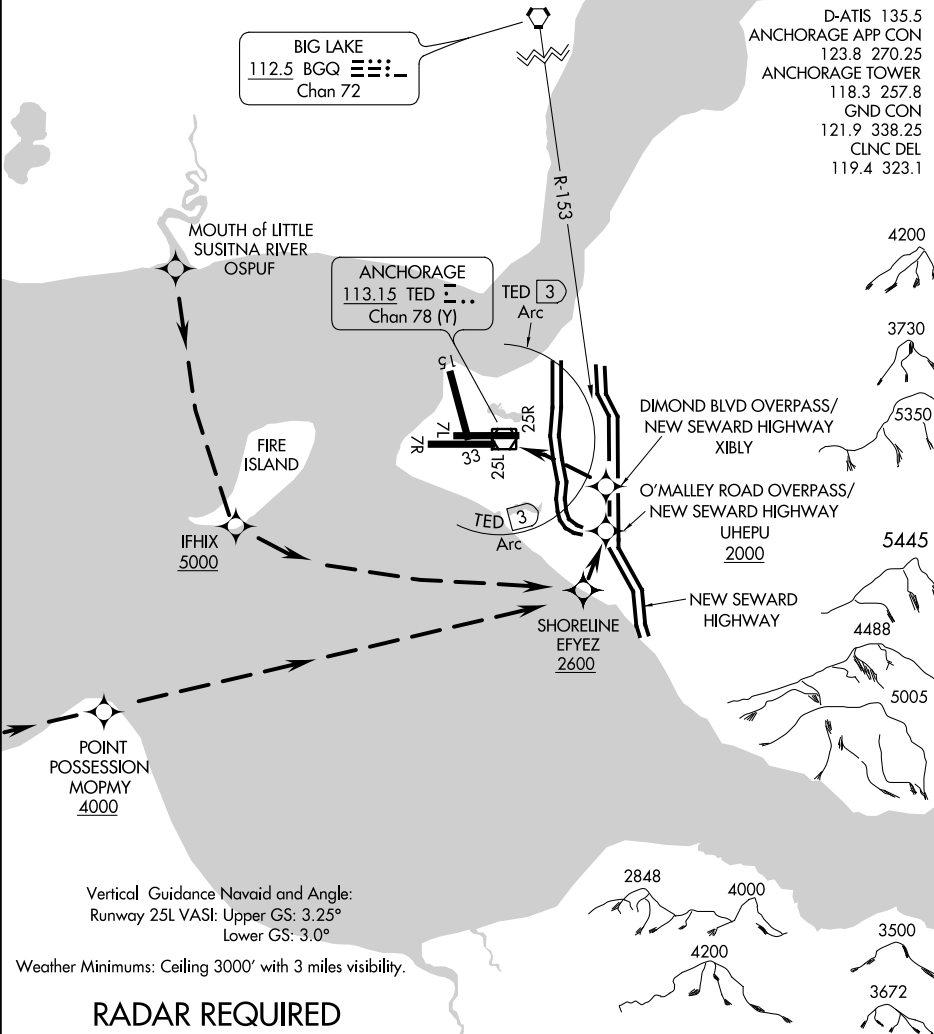


# SEWARD VISUAL RWY 25L

TED STEVENS ANCHORAGE INTL (ANC) (PANC)  
AL-1500 (FAA) ANCHORAGE, ALASKA



## RADAR REQUIRED

NM	1	2	3	4	5	6	7	8	9	10	11	12	13	14	15	16	17	18	19	20	21	22	23	24	25	26
----	---	---	---	---	---	---	---	---	---	----	----	----	----	----	----	----	----	----	----	----	----	----	----	----	----	----

### SEWARD VISUAL RWY 25L

PROCEDURE NOT AUTHORIZED AT NIGHT