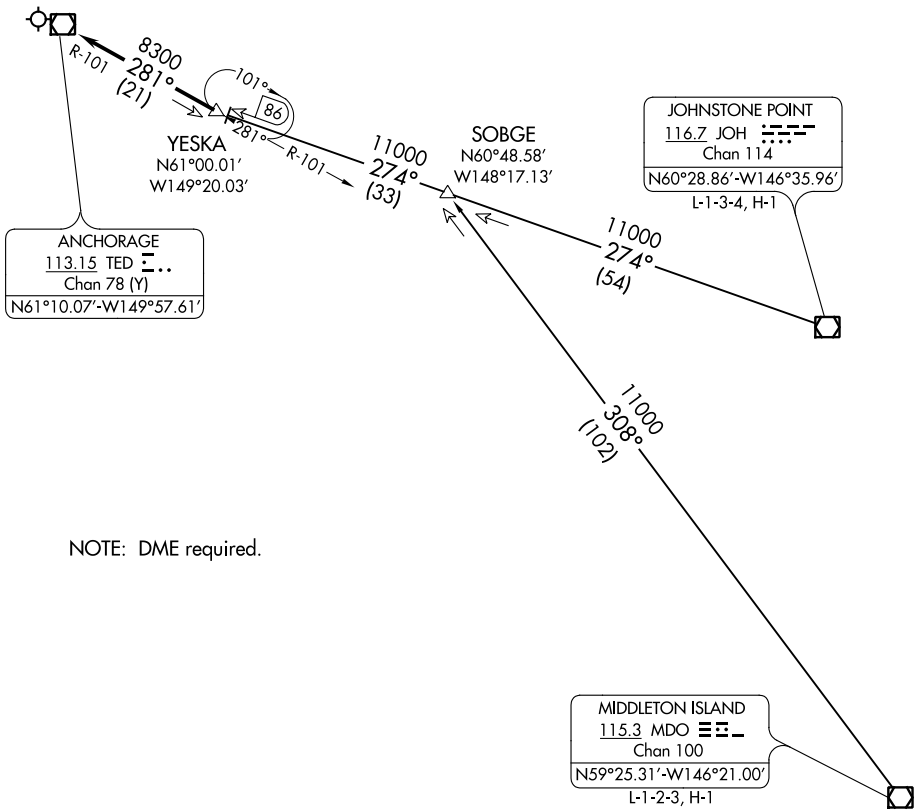


(YESKA.YESKA6) 20198
YESKA SIX ARRIVAL

TED STEVENS ANCHORAGE INTL (ANC)(PANC)
AL-1500 (FAA) ANCHORAGE, ALASKA

ANCHORAGE APP CON
126.4 259.6
ANC/PANC D-ATIS
135.5
MRI/PAMR ATIS
124.25
PAED ATIS ★
124.3 273.5



NOTE: DME required.

NOTE: Chart not to scale.

ARRIVAL ROUTE DESCRIPTION

JOHNSTONE POINT TRANSITION (JOH.YESKA6): From over JOH VOR/DME on JOH R-274 to YESKA. Thence. . . .
MIDDLETON ISLAND TRANSITION (MDO.YESKA6): From over MDO VOR/DME on MDO R-308 to SOBGE, then on JOH R-274 to YESKA. Thence. . . .
. . . .From over YESKA on TED R-101 to TED VOR/DME.
Expect RADAR vectors to final approach course after YESKA.