




APP CRS 016°	Rwy Idg 5190 TDZE 642 Apt Elev 647
------------------------	---

RNAV (GPS) RWY 2

RNP APCH.

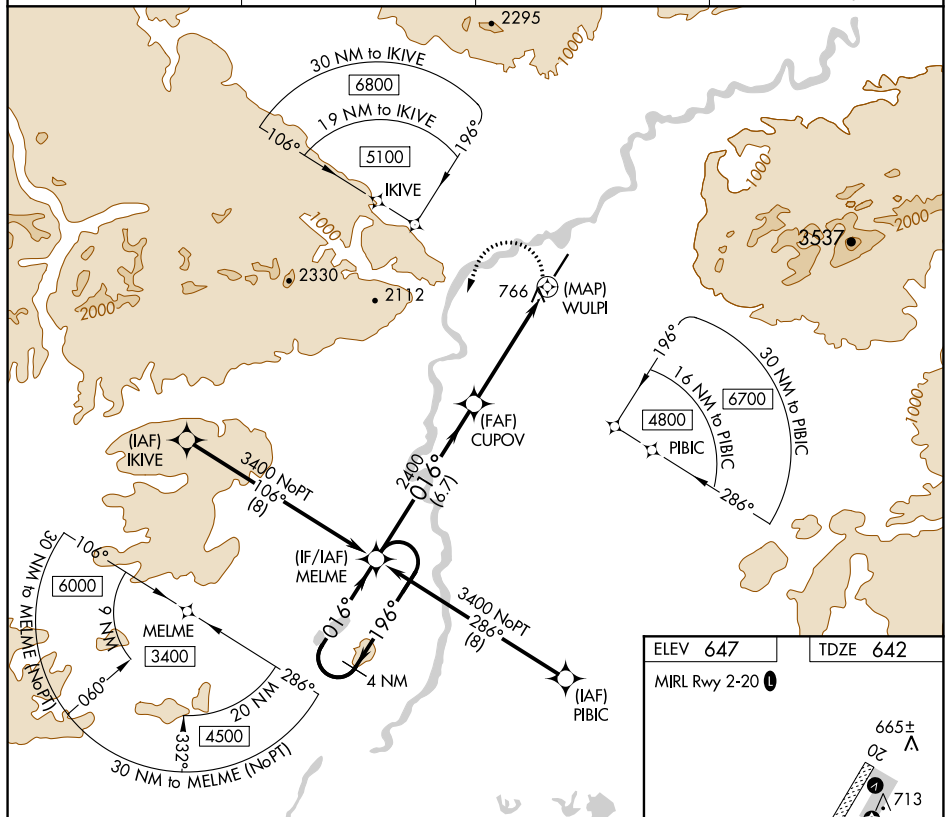
 Inoperative table does not apply. Circling NA east of Rwy 2-20.
 For inop ALS, increase Cat C/D visibility to 1 3/8 SM. Rwy 2
 -45°C helicopter visibility reduction below 3/4 SM NA.

MALSR

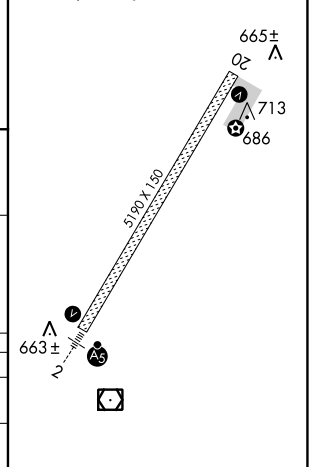
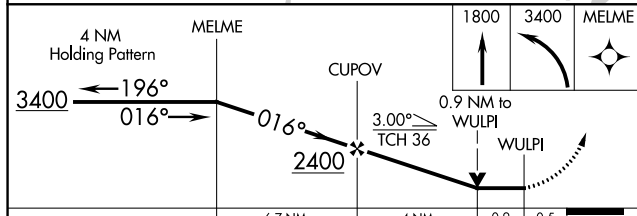


MISSED APPROACH: (Do not exceed 230K until MELME) Climb to 1800 then climbing left turn to 3400 direct MELME and hold.

ASOS 135.45	ANCHORAGE CENTER 124.6 352.0	FAIRBANKS RADIO 122.2	CTAF 122.9
-----------------------	--	---------------------------------	----------------------



ELEV 647	TDZE 642
MIRL Rwy 2-20 L	



CATEGORY	A		B		C		D	
LNAV MDA	1100-1 458 (500-1)							
C CIRCLING	1100-1 453 (500-1)		1320-2 673 (700-2)		1320-2¼ 673 (700-2¼)			