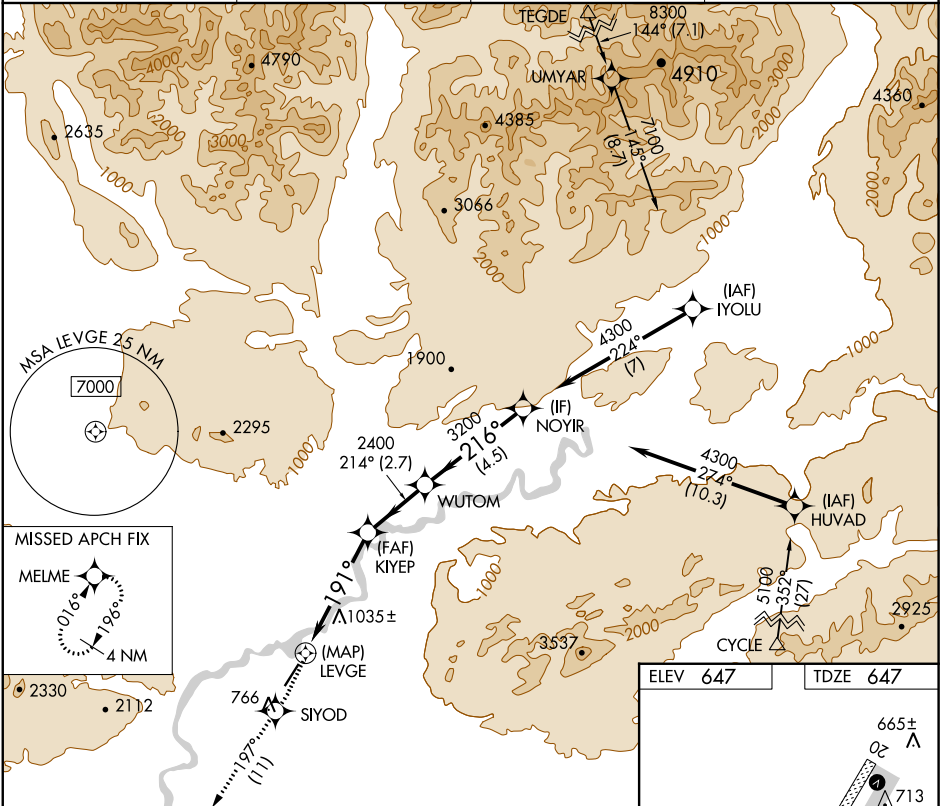


APP CRS	Rwy Idg	5190
191°	TDZE	647
	Apt Elev	647

RNAV (GPS) RWY 20
BETTLES(BTT)(PABT)

RNP APCH.	MISSED APPROACH: Climb to 3200 direct SIYOD and on track 197° to MELME and hold.
 Circling NA east of Rwy 2-20. Rwy 20 helicopter visibility reduction below 3/4 SM NA. -45°C	

ASOS 135.45	ANCHORAGE CENTER 124.6 352.0	FAIRBANKS RADIO 122.2	CTAF 122.9 0
----------------	---------------------------------	--------------------------	-----------------



3200	SIYOD	tr 197°	MELME		
				WUTOM	NOYIR
		1.4 NM to LEVGE			
		≤ 3.00°			
		TCH 52			
		LEVGE			
		0.4	1.4 NM	3.5 NM	2.7 NM
					4.5 NM
CATEGORY	A	B	C	D	
LNAB MDA	1300-1	653 (700-1)	1300-1 7/8	653 (700-1 7/8)	
CIRCLING	1300-1	653 (700-1)	1320-2	1320-2 1/4	
			673 (700-2)	673 (700-2 1/4)	

