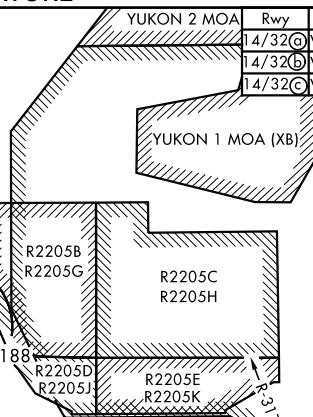
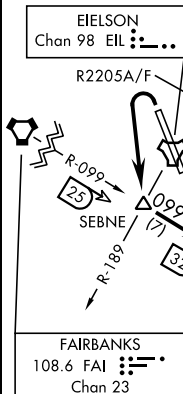


DELTA-SIX DEPARTURE

SH-1729 [USAF]

FAIRBANKS, ALASKA

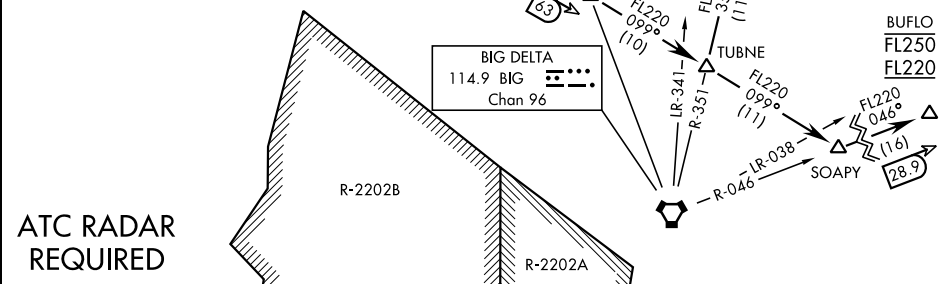
ATIS ★ 119.9 273.5
CLINC DEL
343.7
EIELSON GND CON
121.8 275.8
EIELSON TOWER ★
127.2 352.05
FAIRBANKS DEP CON
127.1 338.275



Rwy	Knots	60	120	180	240	300	360
4/32 (A) V/V(fpm)	444	888	1332	1776	2220	2664	
4/32 (B) V/V(fpm)	410	820	1230	1640	2050	2460	
4/32 (C) V/V(fpm)	303	606	909	1212	1515	1818	

ATC Climb Rate

- Ⓐ DER to FL220 (PAGGI Transition)
- Ⓑ DER to FL220 (MIZZI Transition)
- Ⓒ DER to FL220 (BUFLO Transition)



ATC RADAR
REQUIRED

DEPARTURE ROUTE DESCRIPTION

TAKE-OFF RWY 14 (DELTA6 • ZIREK): Intercept EIL TACAN R-133 to join FAI VORTAC R-099 at ZIREK and track outbound. Thence. . .

TAKE-OFF RWY 32 (DELTA6 • ZIREK): Turn left to intercept FAI VORTAC R-099 at SEBNE. Proceed outbound direct ZIREK. Thence. . .

BUFLO GATE TRANSITION (DELTA6 • BUFLO): Turn left at SOAPY and track outbound on BIG VORTAC R-046 to BUFLO. Cross BUFLO at FL220 block FL250.

MIZZI GATE TRANSITION (DELTA6 • MIZZI): Turn left at TUBNE and track outbound on BIG VORTAC R-351 to MIZZI. Cross MIZZI at FL220 block FL250.

PAGGI GATE TRANSITION (DELTA6 • PAGGI): Turn left at WESED and track outbound on BIG VORTAC R-317 to PAGGI. Cross PAGGI at FL220 block FL250.

DELTA-SIX DEPARTURE

Orig 26MAR20

FAIRBANKS, ALASKA
EIELSON AFB (PAEI)