

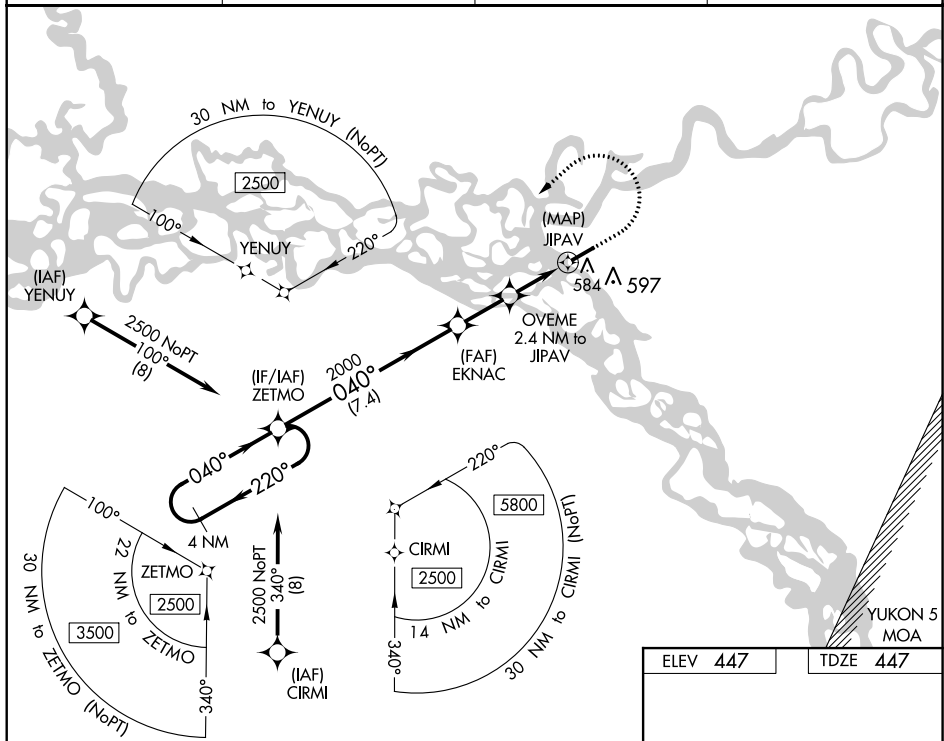
WAAS CH 72939 W04A	APP CRS 040°	Rwy Idg 5000 TDZE 447 Apt Elev 447
--	------------------------	---

RNAV (GPS) RWY 4
FORT YUKON (FYU) (PFYU)

For uncompensated Baro-VNAV systems, LNAV/VNAV NA below -20° C (-4°F) or above 54°C (130°F). Circling NA southeast of Rwy 4-22. DME/DME RNP-0.3 NA. Rwy 4 helicopter visibility reduction below $\frac{3}{4}$ SM NA.

MISSED APPROACH: Climb to 1000 then climbing left turn to 2500 direct ZETMO and hold.

AWOS-3P 125.8	ANCHORAGE CENTER 135.0 225.4	FAIRBANKS RADIO 122.05	CTAF 122.5 0
-------------------------	--	----------------------------------	------------------------



4 NM Holding Pattern

ZETMO 2000

EKNAC 2000

OVEME 2.4 NM to JIPAV

JIPAV 1.2 NM to JIPAV

GP 3.00° TCH 45

2500 ← 220° 040° →

2000

1320

7.4 NM

2.1 NM

1.2 NM

1.2 NM

0.2

1000

2500

ZETMO

* ONAV only

CATEGORY	A	B	C	D
LPV DA	697-1		250 (300-1)	
LNAP/VNAV DA	764-1		317 (400-1)	
LNAP MDA	860-1 413 (500-1)		860-1½ 413 (500-1½)	
CIRCLING	860-1 413 (500-1)		900-1½ 453 (500-1½)	
	900-1 453 (500-1)		1000-2 553 (600-2)	

