


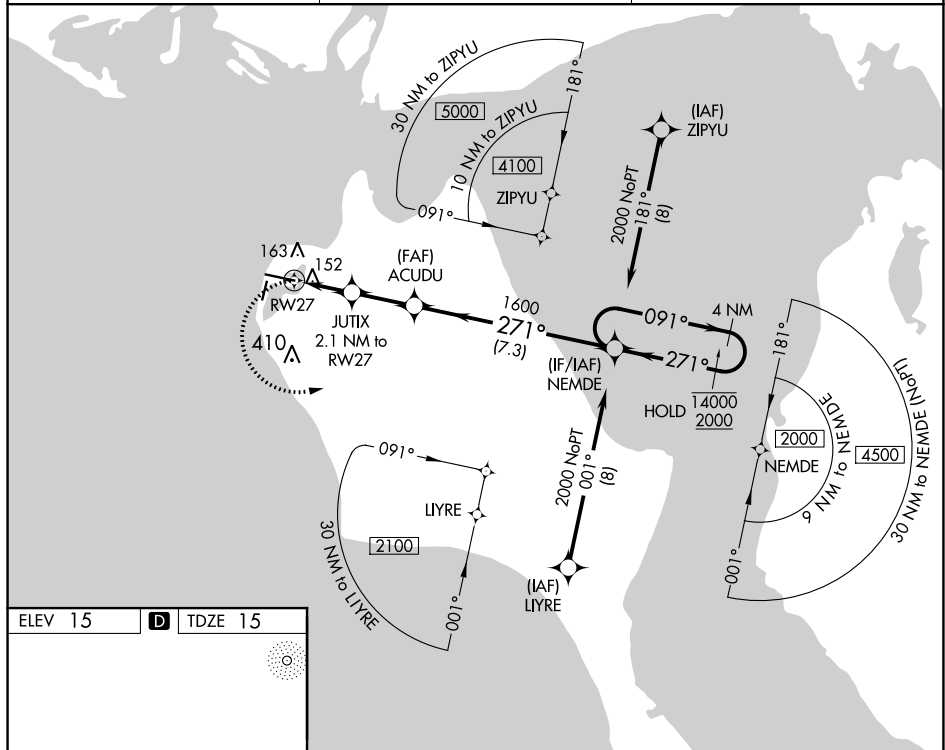


# RNAV (GPS) RWY 27

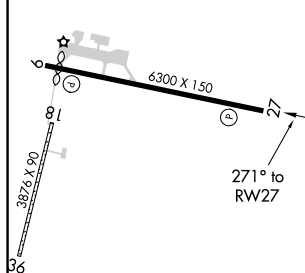
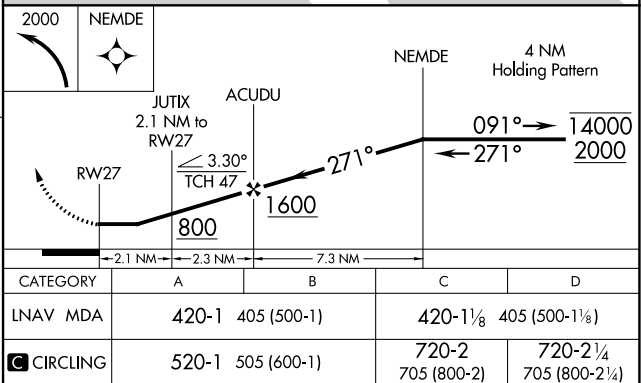
   -44°C	Circling Rwy 18, 36 NA at night. Rwy 27 helicopter visibility reduction below 1 SM NA. Straight-in Rwy 27 NA at night, Circling Rwy 27 at night, operational VGSI required, remain on or above VGSI glidepath until threshold.
---	--

**MISSED APPROACH:** Climbing left turn to 2000 direct NEMDE and hold.

AFIS <b>135.45</b>	ANCHORAGE CENTER <b>119.2 263.0</b>	KOTZEBUE RADIO <b>123.60</b> (CTAF)
-----------------------	--	--



ELEV 15	<b>D</b>	TDZE 15
---------	----------	---------

MIRL Rwy 18-36 **L**

RALPH WIEN MEMORIAL (OTZ) (PAOT)

66°53'N-162°36'W

RNAV (GPS) RWY 27