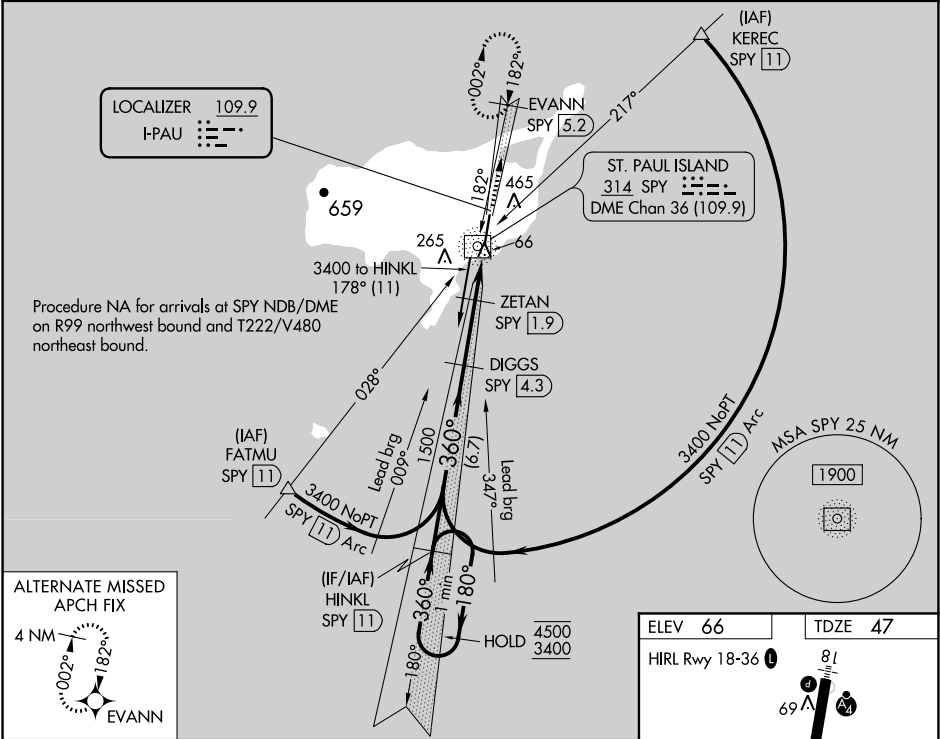


LOC I-PAU 109.9	APP CRS 360°	Rwy ldg 6500
		TDZE 47
		Apt Elev 66

ILS or LOC RWY 36
ST PAUL ISLAND (SNP) (PASN)

ADF and DME required for procedure entry. DME required.	MALSF	MISSED APPROACH: Climb to 2700 on I-PAU north course (360°) to EVANN/SPY 5.2 DME and hold, continue climb-in-hold to 2700.
<div>▼ Circling NA west of Rwy 18-36. Inop table does not apply to S-ILS.</div> <div>▲ When local altimeter setting not received, procedure NA. DME from SPY NDB/DME. Simultaneous reception of I-PAU and SPY DME required.</div>	<div>Ⓜ</div> <div>—</div>	

ASOS 135.75	ANCHORAGE CENTER 119.1 339.8	CTAF 122.3 <div>Ⓜ</div>
-----------------------	--	-----------------------------------



One Minute Holding Pattern	HINKL SPY 11	DIGGS SPY 4.3	2700 I-PAU N crs (360°)	EVANN SPY 5.2
4500 ← 180°	3400 → 360°	1480	1500	*LOC only
GS 3.00° TCH 50	6.7 NM	2.4 NM	1 NM	1 NM
CATEGORY	A	B	C	D
S-ILS 36		247-¾ 200 (200-¾)		
S-LOC 36		380-¾ 333 (400-¾)		
CIRCLING	800-1 734 (800-1)	800-2 734 (800-2)	800-2¼ 734 (800-2¼)	

