


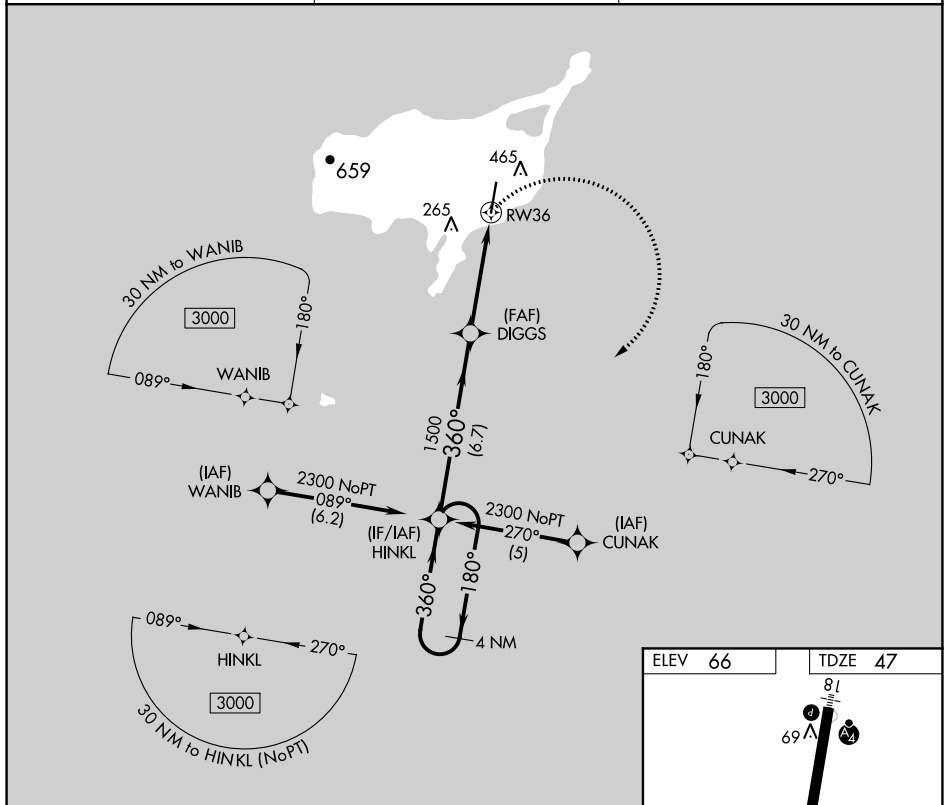


APP CRS <b>360°</b>	Rwy Idg TDZE Apt Elev	<b>6500</b> <b>47</b> <b>66</b>
------------------------	-----------------------------	---------------------------------------

**RNAV (GPS) RWY 36**  
ST PAUL ISLAND (SNP) (PASN)

RNP APCH.	MALSF	MISSED APPROACH: Climbing right turn to 2300 direct HINKL and hold.
 Inoperative table does not apply.  Circling NA west of Rwy 18-36.		

ASOS <b>135.75</b>	ANCHORAGE CENTER <b>119.1 339.8</b>	CTAF <b>122.3 0</b>
-----------------------	--	------------------------



4 NM Holding Pattern

HINGL

DIGGS

RW36

2300

180°

360°

3.04°

TCH 50

2.4 NM to RW36

2.4 NM

2 NM

6.7 NM

HINGL

CATEGORY	A	B	C	D
RNAV MDA	840-1 793 (800-1)	840-1¼ 793 (800-1¼)	840-2¼ 793 (800-2¼)	840-2½ 793 (800-2½)
<b>C</b> CIRCLING	840-1 774 (800-1)	840-1¼ 774 (800-1¼)	840-2¼ 774 (800-2¼)	840-2½ 774 (800-2½)