

RNAV (GPS) RWY 34

APCH CRS	Rwy Idg	4200
345°	TDZE	1476
	Arpt Elev	1565

AL-2332 [USAF]

SPARREVOHN LRRS (PASV)

Night operations not authorized. Circling not authorized. DME/DME RNP-0.3 NA		MISSED APPROACH: Climbing right turn to 5500 direct LIVME and hold.	
ANCHORAGE CENTER 134.3 351.8	KENAI RCO 122.5	UNICOM 126.2 (CTAF)	AWOS-3

Visibility reduction by helicopters NA.

Uncontrolled airspace below 700 AGL within 3 NM of Sparrevohn Airport.

Procedure NA when MOA 1782 (NAKNEK 2 MOA) is active unless coordination with Anchorage Center is completed.

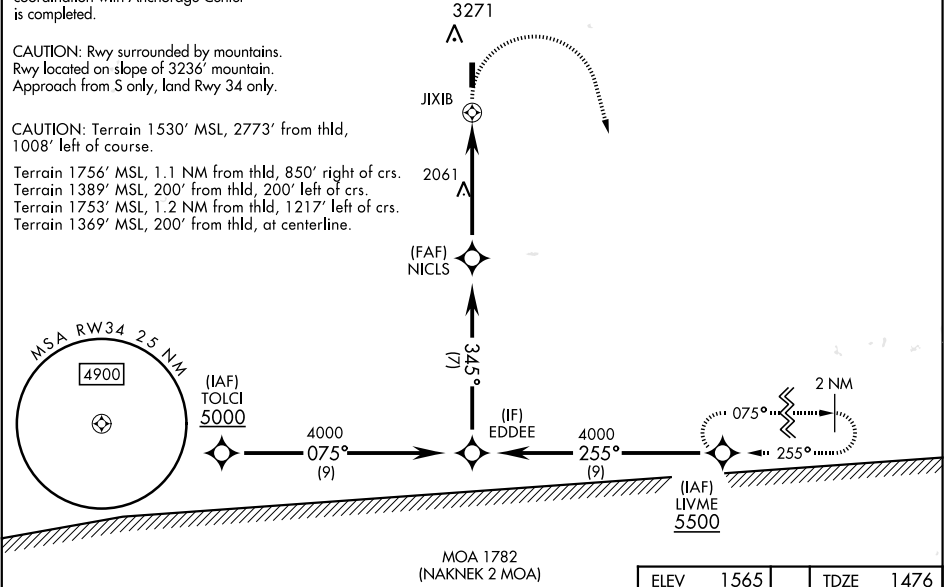
CAUTION: Rwy surrounded by mountains.
Rwy located on slope of 3236' mountain.
Approach from S only, land Rwy 34 only.

CAUTION: Terrain 1530' MSL, 2773' from thld, 1008' left of course.



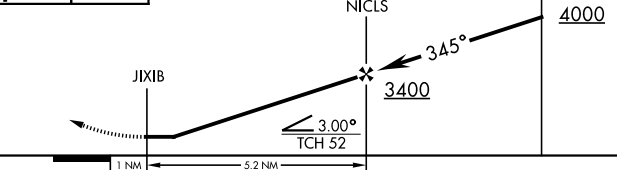
Terrain 1756' MSL, 1.1 NM from thld, 850' right of crs.
Terrain 1389' MSL, 200' from thld, 200' left of crs.
Terrain 1753' MSL, 1.2 NM from thld, 1217' left of crs.
Terrain 1369' MSL, 200' from thld, at centerline.

**MILITARY CERTIFIED AIRCEW OR
AUTHORIZED CONTRACT AIRCRAFT ONLY**

NOT FOR CIVIL USE



EMERG SAFE ALT 100 NM 13,500 FROM JIXIB

<div>5500</div> <div></div>		<div>LIVME</div> <div></div>		VGSI and descent angle not coincident (VGSI Angle 4.00/TCH 52)	
<div></div>					
CATEGORY	A		B		C D
LNAV MDA	3080-1¼ 1604 (1600-1¼)		3240-1½ 1764 (1700-1½)		3320-3 1844 (1800-3)
CIRCLING	NOT AUTHORIZED				

ELEV	1565	TDZE	1476
Land Rwy 34 Tkof Rwy 16			
REIL Rwy 34			

RNAV (GPS) RWY 34

AK, 03 DEC 2020 to 31 DEC 2020

AK, 03 DEC 2020 to 31 DEC 2020