

WAAS CH 42707 W01A	APP CRS 012°	Rwy Idg 6400 TDZE 127 Apt Elev 129
--	------------------------	---

RNAV (GPS) RWY 1L
BETHEL (BET)(PABE)

T For uncompensated Baro-VNAV systems, LNAV/VNAV NA below -25°C (-13°F) or above 54°C (130°F).
Circling NA west of Rwy 1L-19R. DME/DME RNP-0.3 NA.
For inop ALS, increase LNAV Cat C/D visibility to RVR 6000.

MALSR



MISSED APPROACH: Climb to 2000
direct KUSKM and left turn on track
257° to ROLLR and hold.

ATIS 119.8	ANCHORAGE CENTER 125.2 372.0	BETHEL TOWER ★ 118.7 (CTAF) 0	GND CON 121.7
----------------------	--	--	-------------------------

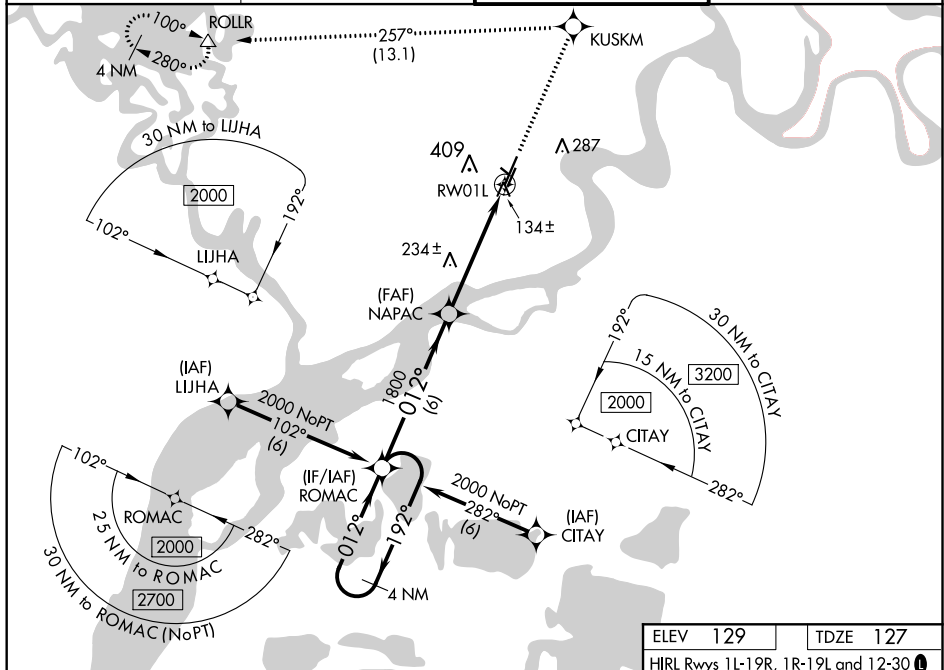


Diagram illustrating the VOR/DME approach for RW01L. The diagram shows the 4 NM Holding Pattern at 2000 feet, the ROMAC (Route of Mission) segment, and the final approach segment. Key waypoints include NAPAC at 1800 feet and RW01L. The diagram indicates a 1.1 NM distance to RW01L and a 1.1 NM distance to the final approach. The diagram also shows the VGS and RNAV glidepath not coincident (VGS Angle 3.00/TCH 39).

CATEGORY	A	B	C	D
LPV DA	377/24	250 (300-½)		
LN/VNAV/DA	555/50	428 (500-1)		
LN/VNAV MDA	500/24	373 (400-½)	500/50	373 (400-1)
CIRCLING	500-1 371 (400-1)	600-1 471 (500-1)	600-1½ 471 (500-1½)	680-2 551 (600-2)

