

APP CRS  
**192°**

Rwy Idg  
**6400**

TDZE  
**81**

Apt Elev  
**82**

**RNAV (GPS) RWY 19**

DILLINGHAM (DLG)(PADL)

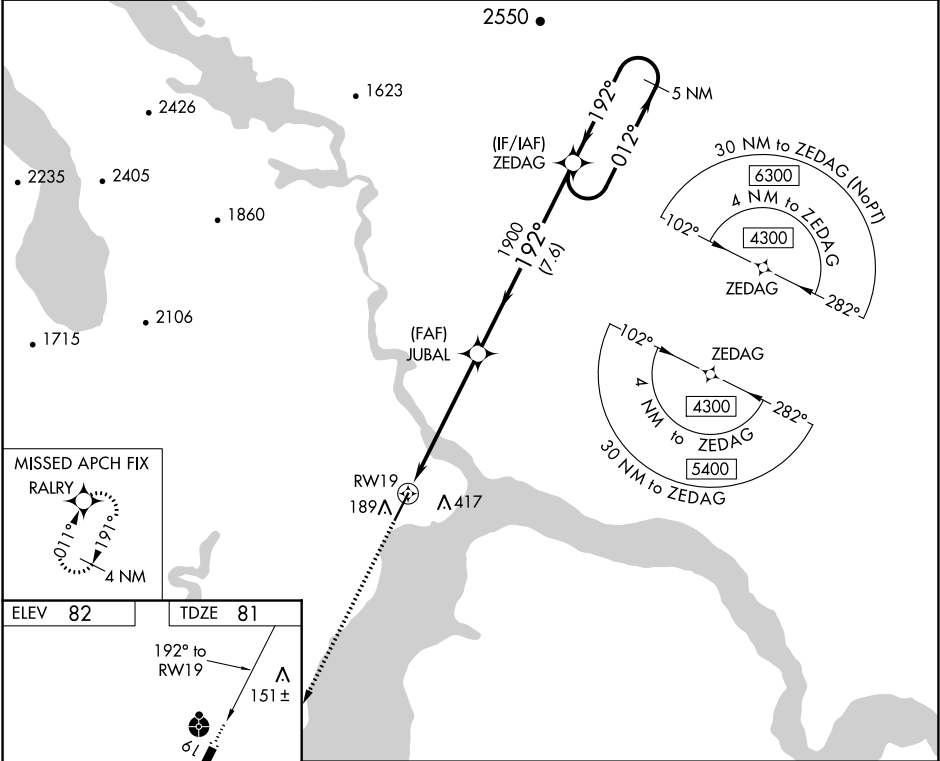
**⚠** Inop table does not apply to Cats A/B. Inop table does not apply when using Manokotok altimeter setting. Circling NA east of Rwy 1-19. Rwy 19 helicopter visibility reduction below ¾ SM NA. DME/DME RNP-0.3 NA. VDP NA when using Manokotok altimeter setting. When local altimeter setting not received, use Manokotok altimeter setting and increase all MDA 40 feet and increase LNAV Cat C/D visibility ½ SM. For inop ALS, increase LNAV Cat C/D visibility to 1 ¾ mile.

ODALS

MISSED APPROACH:

Climb to 2600 direct RALRY and hold.

AFIS ★ <b>125.0</b>	ANCHORAGE CENTER <b>132.75 282.35</b>	DILLINGHAM RADIO <b>123.6</b> (CTAF)
------------------------	--	---



ELEV 82

TDZE 81

Visual Segment - Obstacles.

ZEDAG

5 NM Holding Pattern

012° → 4300

← 192°

CATEGORY	A	B	C	D
LNAV MDA	560-1	479 (500-1)	560-1 ¼	479 (500-1 ¼)
CIRCLING	600-1	518 (600-1)	700-1 ¾ 618 (700-1 ¾)	780-2 ¼ 698 (700-2 ¼)