

VOR/DME DLG	APP CRS	Rwy Idg	6400
<b>116.4</b>	<b>010°</b>	TDZE	82
Chan 111		Apt Elev	82

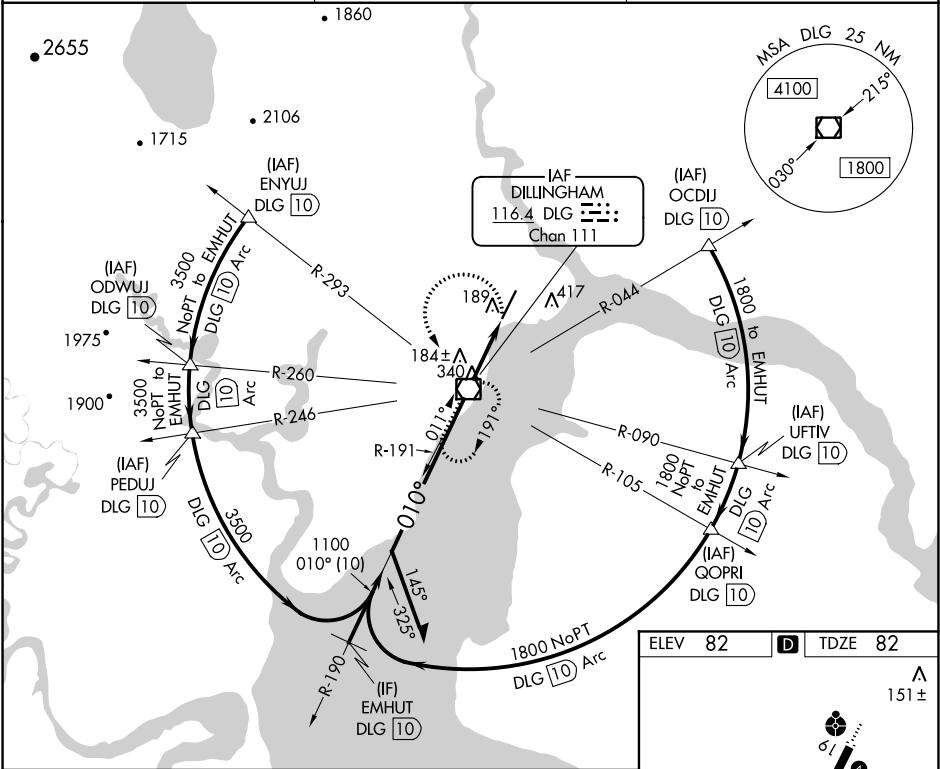
VOR RWY 1  
DILLINGHAM (DLG)(PADL)

**V**  
**A**

Rwy 1 helicopter visibility reduction below ¾ SM NA.  
Circling NA east of Rwy 1-19.

MISSED APPROACH: Climbing left turn to 2000 direct DLG VOR/DME and hold, continue climb-in-hold to 2000.

AFIS ★ <b>125.0</b>	ANCHORAGE CENTER <b>132.75 282.35</b>	DILLINGHAM RADIO <b>123.6 (CTAF) 0</b>
------------------------	--	---



VGSI and descent angles not coincident (VGSI Angle 3.00/TCH 45).

Remain within 10 NM

2000

190°

010°

1100

3.25° TCH 45

DLG 1.6

DLG 2.8

1.6 NM

1.2 NM

CATEGORY	A	B	C	D
S-1	500-1 418 (500-1)		500-1¼ 418 (500-1¼)	
<b>C</b> CIRCLING	600-1 518 (600-1)		700-1¾ 618 (700-1¾)	780-2¼ 698 (700-2¼)

ELEV 82	<b>D</b>	TDZE 82
---------	----------	---------

151±

61

118±

010° 2.8 NM from FAF

REIL Rwy 19

HIRL Rwy 1-19 0

FAF to MAP 2.8 NM

Knots	60	90	120	150	180
Min:Sec	2:48	1:52	1:24	1:07	0:56