

WAAS CH <b>56632</b> <b>W11A</b>	APP CRS <b>115°</b>	Rwy Idg <b>6500</b> TDZE <b>24</b> Apt Elev <b>27</b>
--	------------------------	---

RNAV (GPS) RWY 11  
SITKA ROCKY GUTIERREZ (SIT)(PASI)

RNP APCH.

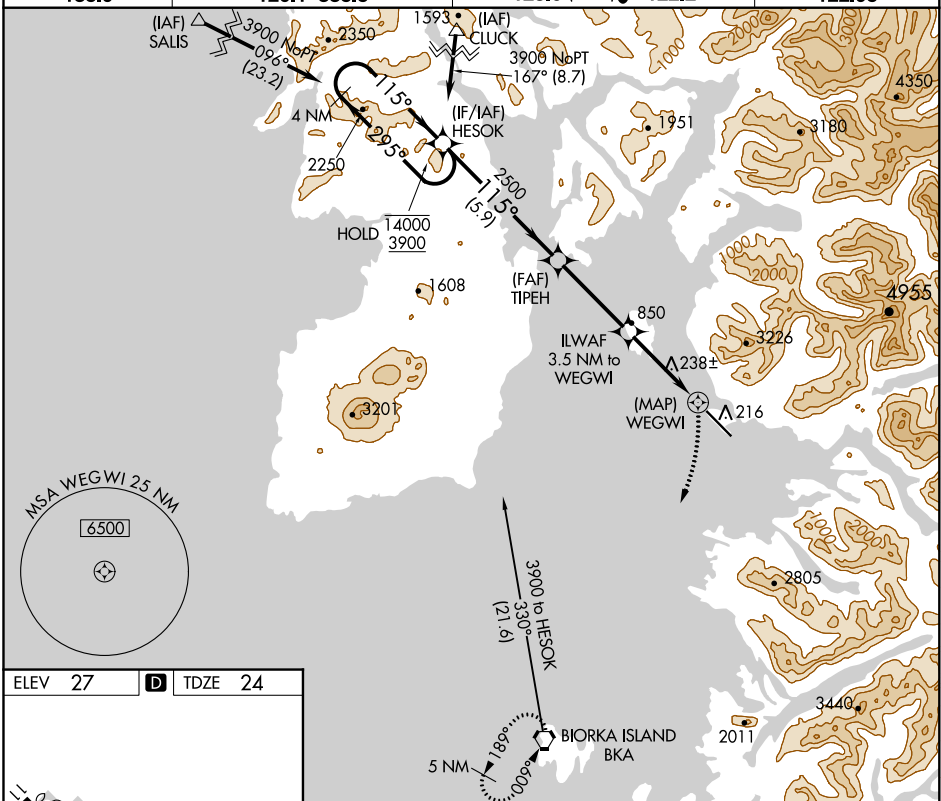
**T** When local altimeter setting not received, procedure NA.  
**A** Circling NA northeast of Rwy 11-29.

**MISSED APPROACH:** Climbing right turn to 5000 direct BKA VORTAC and hold, continue climb-in-hold to 5000.

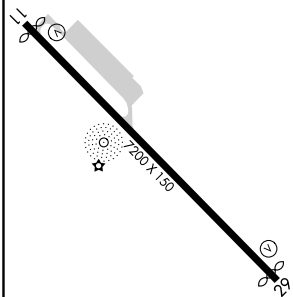
AFIS  
135.9

ANCHORAGE CENTER  
126.1 335.5

SITKA RADIO  
123.6 (CTAF) **L** 122.2

UNICOM  
122.95

ELEV 27	<b>D</b>	TDZE 24
---------	----------	---------

REIL Rwy 11 and 29 **L**HIRL Rwy 11-29 **L**

4 NM Holding Pattern

HESOK

TIPEH

ILWAF 3.5 NM to WEGWI

0.8 NM to WEGWI

WEGWI

1400

3900

295°

115°

115°

2500

1360

3.00°

TCH 50

5.9 NM

3.6 NM

2.7 NM

0.8 NM

0.5 NM

5000 BKA

CATEGORY	A	B	C	D
LP MDA	500-1	476 (500-1)	500-1 $\frac{3}{8}$	476 (500-1 $\frac{3}{8}$ )
LNAV MDA	1300-1 $\frac{1}{4}$ 1276 (1300-1 $\frac{1}{4}$ )	1300-1 $\frac{1}{2}$ 1276 (1300-1 $\frac{1}{2}$ )	1300-3	1276 (1300-3)
CIRCLING	1300-1 $\frac{1}{4}$ 1273 (1300-1 $\frac{1}{4}$ )	1300-1 $\frac{1}{2}$ 1273 (1300-1 $\frac{1}{2}$ )	1300-3 1273 (1300-3)	1660-3 1633 (1700-3)

SITKA, ALASKA  
Amdt 2 16JUL20

57°03'N-135°22'W

SITKA ROCKY GUTIERREZ (SIT)(PASI)  
RNAV (GPS) RWY 11