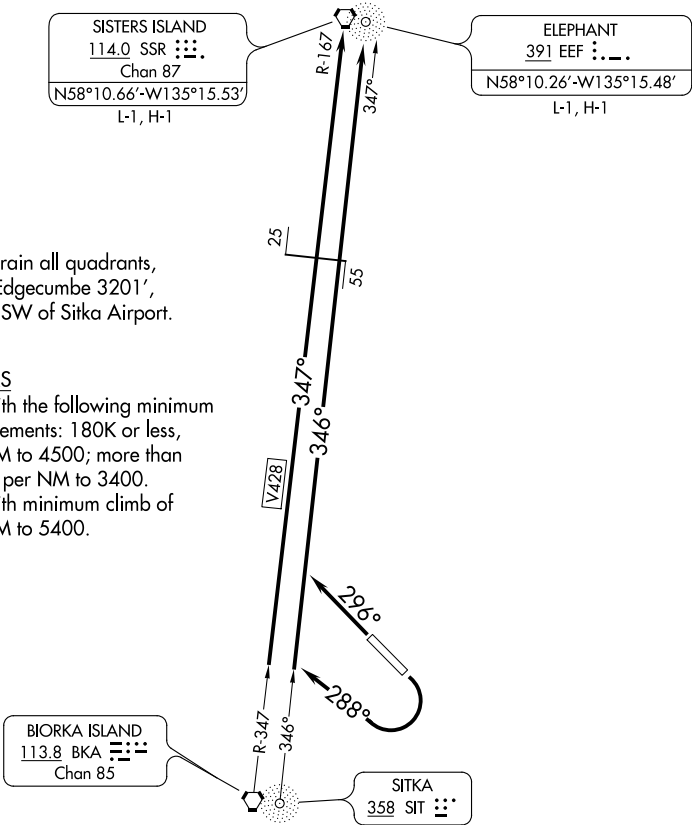


AFIS  
135.9  
ANCHORAGE CENTER  
126.1 335.5  
SITKA RADIO  
123.6 (CTAF) 122.2  
UNICOM  
122.95

WARNING: High terrain all quadrants,  
Mount Edgecumbe 3201',  
13 NM SW of Sitka Airport.

TAKEOFF MINIMUMS

- Rwy 11: Standard with the following minimum  
climb requirements: 180K or less,  
390' per NM to 4500; more than  
180K, 645' per NM to 3400.
- Rwy 29: Standard with minimum climb of  
357' per NM to 5400.



NOTE: Chart not to scale.

DEPARTURE ROUTE DESCRIPTION

- TAKEOFF RUNWAY 11: Climbing right turn heading 288° to join V428 and SSR R-167  
to SSR VORTAC or on SIT 346° bearing and EEF 347° course to EEF NDB.
- TAKEOFF RUNWAY 29: Climb heading 296° to join V428 to SSR VORTAC or SIT  
NDB 346° bearing and EEF 347° course to EEF NDB.