

19171

NDB/DME OLT <u>346</u> Chan 106 (115.9)	APP CRS 075°	Rwy Idg 5001 TDZE 102 Apt Elev 113
--	------------------------	---

NDB RWY 7
SOLDOTNA (SXQ)(PASX)

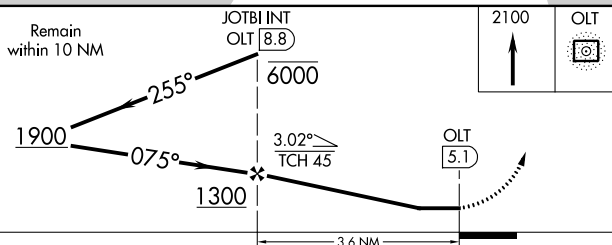
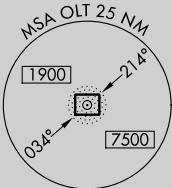
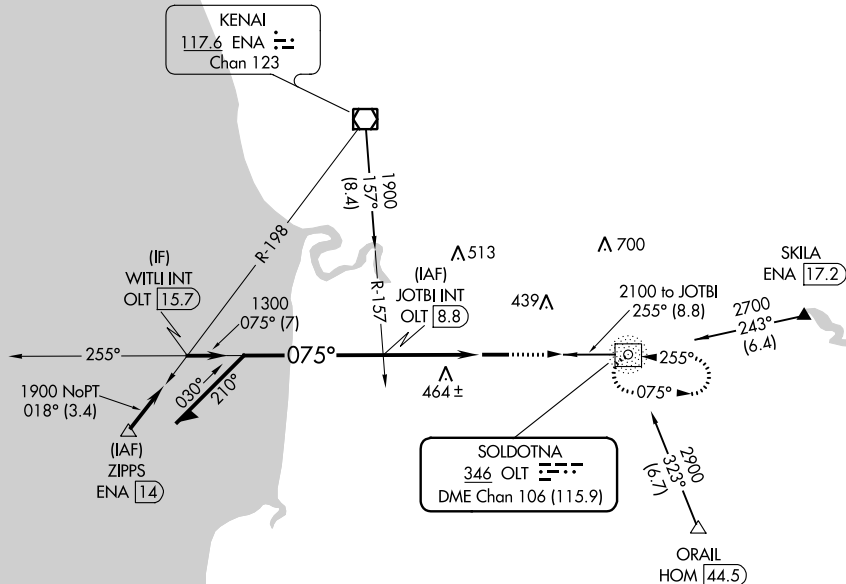
T Circling NA to Rwy 7S and 25S. Straight-in Rwy 7 NA at night,
A Circling Rwy 7 NA at night. Rwy 7 helicopter visibility reduction
below 1 SM NA.


MISSED APPROACH: Climb to 2100 direct
OLT NDB/DME and hold.

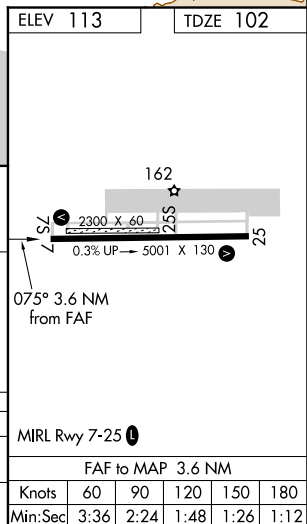
AWOS-3P
135.45

ANCHORAGE CENTER
125.7 379.1

CTAF
122.50



CATEGORY	A	B	C	D
S-7	860-1 758 (800-1)	860-1¼ 758 (800-1¼)	860-2½	758 (800-2½)
 CIRCLING	860-1 747 (800-1)	860-1¼ 747 (800-1¼)	860-2½ 747 (800-2½)	980-2¾ 867 (900-2¾)



SOLDOTNA, ALASKA
Amdt 2F 20JUN19

SOLDOTNA (SXQ)(PASX)
NDB RWY 7

60°29'N-151°02'W

AK, 05 NOV 2020 to 31 DEC 2020

AK, 05 NOV 2020 to 31 DEC 2020