

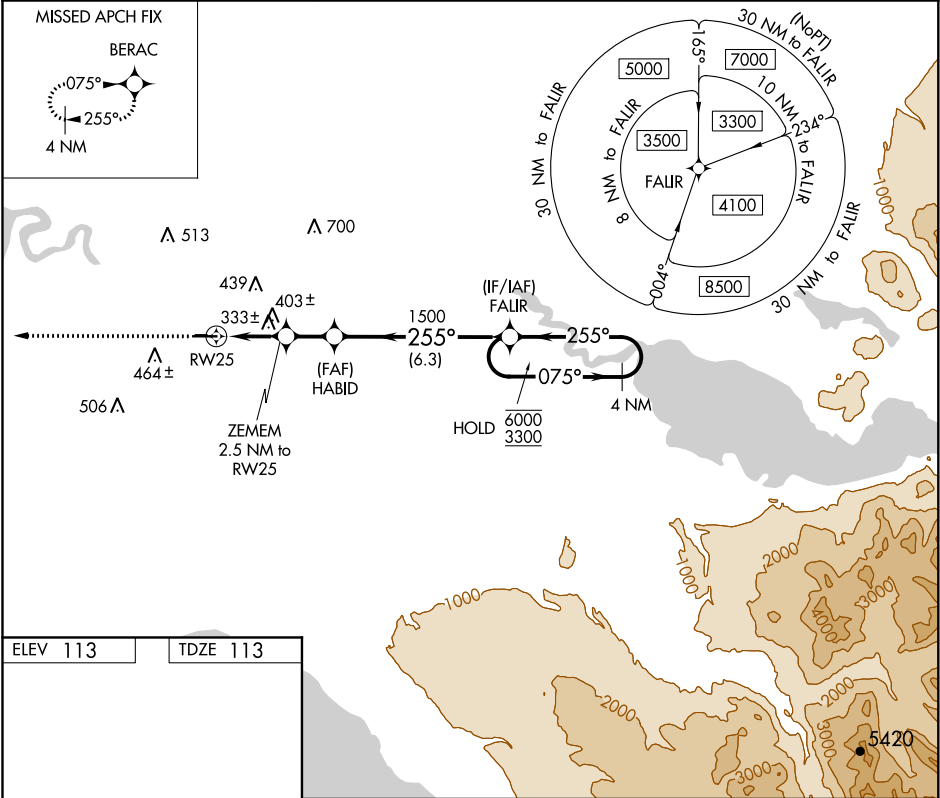
WAAS CH 86236 W25A	APP CRS 255°	Rwy Idg TDZE 113 Apt Elev 113
--	------------------------	---

RNAV (GPS) RWY 25

SOLDOTNA (SXQ)(PASX)

RNP APCH.	<div><div>⚠</div><div>Circling NA to Rws 7S and 25S. Circling Rwy 7 NA at night. Rwy 25 helicopter visibility reduction below ¾ SM NA.</div></div>	MISSED APPROACH: Climb to 2600 direct BERAC and hold.
-----------	--	---

AWOS-3P 135.45	ANCHORAGE CENTER 125.7 379.1	CTAF 122.5
--------------------------	--	----------------------



162

2300 X 60

255

0.3% UP → 5001 X 130

255° to RW25

2600

BERAC

1.4 NM to RW25

2.5 NM to RW25

1.4 NM

1.1 NM

1.7 NM

6.3 NM

900

1500

255°

075°

4 NM Holding Pattern

6000

3300

255°

2600

BERAC

1.4 NM to RW25

2.5 NM to RW25

1.4 NM

1.1 NM

1.7 NM

6.3 NM

900

1500

255°

075°

4 NM Holding Pattern

6000

3300

255°

162

2300 X 60

255

0.3% UP → 5001 X 130

255° to RW25

2600

BERAC

1.4 NM to RW25

2.5 NM to RW25

1.4 NM

1.1 NM

1.7 NM

6.3 NM

900

1500

255°

075°

4 NM Holding Pattern

6000

3300

255°

162

2300 X 60

255

0.3% UP → 5001 X 130

255° to RW25

2600

BERAC

1.4 NM to RW25

2.5 NM to RW25

1.4 NM

1.1 NM

1.7 NM

6.3 NM

900

1500

255°

075°

4 NM Holding Pattern

6000

3300

255°

162

2300 X 60

255

0.3% UP → 5001 X 130

255° to RW25

2600

BERAC

1.4 NM to RW25

2.5 NM to RW25

1.4 NM

1.1 NM

1.7 NM

6.3 NM

900

1500

255°

075°

4 NM Holding Pattern

6000

3300

255°

162

2300 X 60

255

0.3% UP → 5001 X 130

255° to RW25

2600

BERAC

1.4 NM to RW25

2.5 NM to RW25

1.4 NM

1.1 NM

1.7 NM

6.3 NM

900

1500

255°

075°

4 NM Holding Pattern

6000

3300

255°

162

2300 X 60

255

0.3% UP → 5001 X 130

255° to RW25

2600

BERAC

1.4 NM to RW25

2.5 NM to RW25

1.4 NM

1.1 NM

1.7 NM

6.3 NM

900

1500

255°

075°

4 NM Holding Pattern

6000

3300

255°

162

2300 X 60

255

0.3% UP → 5001 X 130

255° to RW25

2600

BERAC

1.4 NM to RW25

2.5 NM to RW25

1.4 NM

1.1 NM

1.7 NM

6.3 NM

900

1500

255°

075°

4 NM Holding Pattern

6000

3300

255°

162

2300 X 60

255

0.3% UP → 5001 X 130

255° to RW25

2600

BERAC

1.4 NM to RW25

2.5 NM to RW25

1.4 NM

1.1 NM

1.7 NM

6.3 NM

900

1500

255°

075°

4 NM Holding Pattern

6000

3300

255°

162

2300 X 60

255

0.3% UP → 5001 X 130

255° to RW25

2600

BERAC

1.4 NM to RW25

2.5 NM to RW25

1.4 NM

1.1 NM

1.7 NM

6.3 NM

900

1500

255°

075°

4 NM Holding Pattern

6000

3300

255°

162

2300 X 60

255

0.3% UP → 5001 X 130

255° to RW25

2600

BERAC

1.4 NM to RW25

2.5 NM to RW25

1.4 NM

1.1 NM

1.7 NM

6.3 NM

900

1500

255°

075°

4 NM Holding Pattern

6000

3300

255°

162

2300 X 60

255

0.3% UP → 5001 X 130

255° to RW25

2600

BERAC

1.4 NM to RW25

2.5 NM to RW25

1.4 NM

1.1 NM

1.7 NM

6.3 NM

900

1500

255°

075°

4 NM Holding Pattern

6000

3300

255°

162

2300 X 60

255

0.3% UP → 5001 X 130

255° to RW25

2600

BERAC

1.4 NM to RW25

2.5 NM to RW25

1.4 NM

1.1 NM

1.7 NM

6.3 NM

900

1500

255°

075°

4 NM Holding Pattern

6000

3300

255°

162

2300 X 60

255

0.3% UP → 5001 X 130

255° to RW25

2600

BERAC

1.4 NM to RW25

2.5 NM to RW25

1.4 NM

1.1 NM

1.7 NM

6.3 NM

900

1500

255°

075°

4 NM Holding Pattern

6000

3300

255°

162

2300 X 60

255

0.3% UP → 5001 X 130

255° to RW25

2600

BERAC

1.4 NM to RW25

2.5 NM to RW25

1.4 NM

1.1 NM

1.7 NM

6.3 NM

900

1500

255°

075°

4 NM Holding Pattern

6000

3300

255°

162

2300 X 60

255

0.3% UP → 5001 X 130

255° to RW25

2600

BERAC

1.4 NM to RW25

2.5 NM to RW25

1.4 NM

1.1 NM

1.7 NM

6.3 NM

900

1500

255°

075°

4 NM Holding Pattern

6000

3300

255°

162

2300 X 60

255

0.3% UP → 5001 X 130

255° to RW25

2600

BERAC

1.4 NM to RW25

2.5 NM to RW25

1.4 NM

1.1 NM

1.7 NM

6.3 NM

900

1500

255°

075°

4 NM Holding Pattern

6000

3300

255°

162

2300 X 60

255

0.3% UP → 5001 X 130

255° to RW25

2600

BERAC

1.4 NM to RW25

2.5 NM to RW25

1.4 NM

1.1 NM

1.7 NM

6.3 NM

900

1500

255°

075°

4 NM Holding Pattern

6000

3300

255°

162

2300 X 60

255

0.3% UP → 5001 X 130

255° to RW25

2600

BERAC

1.4 NM to RW25

2.5 NM to RW25

1.4 NM

1.1 NM

1.7 NM

6.3 NM

900

1500

255°

075°

4 NM Holding Pattern

6000

3300

255°

162

2300 X 60

255

0.3% UP → 5001 X 130

255° to RW25

2600

BERAC

1.4 NM to RW25

2.5 NM to RW25

1.4 NM

1.1 NM

1.7 NM

6.3 NM

900

1500

255°

075°

4 NM Holding Pattern

6000

3300

255°

162

2300 X 60

255

0.3% UP → 5001 X 130

255° to RW25

2600

BERAC

1.4 NM to RW25

2.5 NM to RW25

1.4 NM

1.1 NM

1.7 NM

6.3 NM

900

1500

255°

075°

4 NM Holding Pattern

6000

3300

255°

162

2300 X 60

255

0.3% UP → 5001 X 130

255° to RW25

2600

BERAC

1.4 NM to RW25

2.5 NM to RW25

1.4 NM

1.1 NM

1.7 NM

6.3 NM

900

1500

255°

075°

4 NM Holding Pattern

6000

3300

255°

162

2300 X 60

255

0.3% UP → 5001 X 130

255° to RW25

2600

BERAC

1.4 NM to RW25

2.5 NM to RW25

1.4 NM

1.1 NM

1.7 NM

6.3 NM

900

1500

255°

075°

4 NM Holding Pattern

6000

3300

255°

162

2300 X 60

255

0.3% UP → 5001 X 130

255° to RW25

2600

BERAC

1.4 NM to RW25

2.5 NM to RW25

1.4 NM

1.1 NM

1.7 NM

6.3 NM

900

1500

255°

075°

4 NM Holding Pattern

6000

3300

255°

162

2300 X 60

255

0.3% UP → 5001 X 130

255° to RW25

2600

BERAC

1.4 NM to RW25

2.5 NM to RW25

1.4 NM

1.1 NM

1.7 NM

6.3 NM

900

1500

255°

075°

4 NM Holding Pattern

6000

3300

255°

162

2300 X 60

255

0.3% UP → 5001 X 130

255° to RW25

2600

BERAC

1.4 NM to RW25

2.5 NM to RW25

1.4 NM

1.1 NM

1.7 NM

6.3 NM

900

1500

255°

075°

4 NM Holding Pattern

6000

3300

255°

162

2300 X 60

255

0.3% UP → 5001 X 130

255° to RW25

2600

BERAC

1.4 NM to RW25

2.5 NM to RW25

1.4 NM

1.1 NM

1.7 NM

6.3 NM

900

1500

255°

075°

4 NM Holding Pattern

6000

3300

255°

162

2300 X 60

255

0.3% UP → 5001 X 130

255° to RW25

2600

BERAC

1.4 NM to RW25

2.5 NM to RW25

1.4 NM

1.1 NM

1.7 NM

6.3 NM

900

1500

255°

075°

4 NM Holding Pattern

6000

3300

255°

162

2300 X 60

255

0.3% UP → 5001 X 130

255° to RW25

2600

BERAC

1.4 NM to RW25

2.5 NM to RW25

1.4 NM

1.1 NM

1.7 NM

6.3 NM

900

1500

255°

075°

4 NM Holding Pattern

6000

3300

255°

162

2300 X 60

255

0.3% UP → 5001 X 130

255° to RW25

2600

BERAC

1.4 NM to RW25

2.5 NM to RW25

1.4 NM

1.1 NM

1.7 NM

6.3 NM

900

1500

255°

075°

4 NM Holding Pattern

6000

3300

255°

162

2300 X 60

255

0.3% UP → 5001 X 130

255° to RW25

2600

BERAC

1.4 NM to RW25

2.5 NM to RW25

1.4 NM

1.1 NM

1.7 NM

6.3 NM

900

1500

255°

075°

4 NM Holding Pattern

6000

3300

255°

162

2300 X 60

255

0.3% UP → 5001 X 130

255° to RW25

2600

BERAC

1.4 NM to RW25

2.5 NM to RW25

1.4 NM

1.1 NM

1.7 NM

6.3 NM

900

1500

255°

075°

4 NM Holding Pattern

6000

3300

255°

162

2300 X 60

255

0.3% UP → 5001 X 130

255° to RW25

2600

BERAC

1.4 NM to RW25

2.5 NM to RW25

1.4 NM

1.1 NM

1.7 NM

6.3 NM

900

1500

255°

075°

4 NM Holding Pattern

6000

3300

255°

162

2300 X 60

255

0.3% UP → 5001 X 130

255° to RW25

2600

BERAC

1.4 NM to RW25

2.5 NM to RW25

1.4 NM

1.1 NM

1.7 NM

6.3 NM

900

1500

255°

075°

4 NM Holding Pattern

6000

3300

255°

162

2300 X 60

255

0.3% UP → 5001 X 130

255° to RW25

2600

BERAC

1.4 NM to RW25

2.5 NM to RW25

1.4 NM

1.1 NM

1.7 NM

6.3 NM

900

1500

255°

075°

4 NM Holding Pattern

6000

3300

255°

162

2300 X 60

255

0.3% UP → 5001 X 130

255° to RW25

2600

BERAC

1.4 NM to RW25

2.5 NM to RW25

1.4 NM

1.1 NM

1.7 NM

6.3 NM

900

1500

255°

075°

4 NM Holding Pattern

6000

3300

255°

162

2300 X 60

255

0.3% UP → 5001 X 130

255° to RW25

2600

BERAC

1.4 NM to RW25

2.5 NM to RW25

1.4 NM

1.1 NM

1.7 NM

6.3 NM

900

1500

255°

075°

4 NM Holding Pattern

6000

3300

255°

162

2300 X 60

255

0.3% UP → 5001 X 130

255° to RW25

2600

BERAC

1.4 NM to RW25

2.5 NM to RW25

1.4 NM

1.1 NM

1.7 NM

6.3 NM

900

1500

255°

075°

4 NM Holding Pattern

6000

3300

255°

162

2300 X 60

255

0.3% UP → 5001 X 130

255° to RW25

2600

BERAC